



England 2 - 1 Colombia

Quarter-final - Match 60

12 August 2023

20:30 Kick Off

Stadium Australia

POST MATCH SUMMARY REPORT

Match Summary - Teams

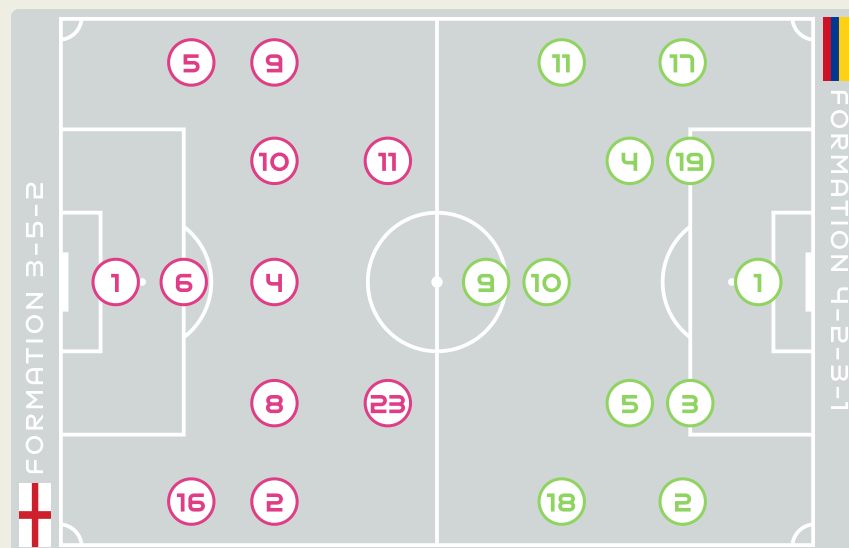


STARTING

1	GK	EARPS Mary		
2	DF	BRONZE Lucy		
4	MF	WALSH Keira		
5	DF	GREENWOOD Alex		
6	DF	BRIGHT Millie (C)		
8	MF	STANWAY Georgia		
9	FW	DALY Rachel		
10	MF	TOONE Ella		
11	FW	HEMP Lauren	⚽ 45+6'	↓ 90+3'
16	DF	CARTER Jessica		
23	FW	RUSSO Alessia	⚽ 63'	↓ 84'

SUBSTITUTES

13	GK	HAMPTON Hannah		
21	GK	ROEBUCK Ellie		
3	DF	CHARLES Niamh		
12	MF	NOBBS Jordan		
14	DF	WUBBEN-MOY Lotte		
15	DF	MORGAN Esme		
17	MF	COOMBS Laura		
18	FW	KELLY Chloe	↑ 84'	
19	FW	ENGLAND Beth	↑ 90+3'	
20	MF	ZELEM Katie		
22	FW	ROBINSON Katie		



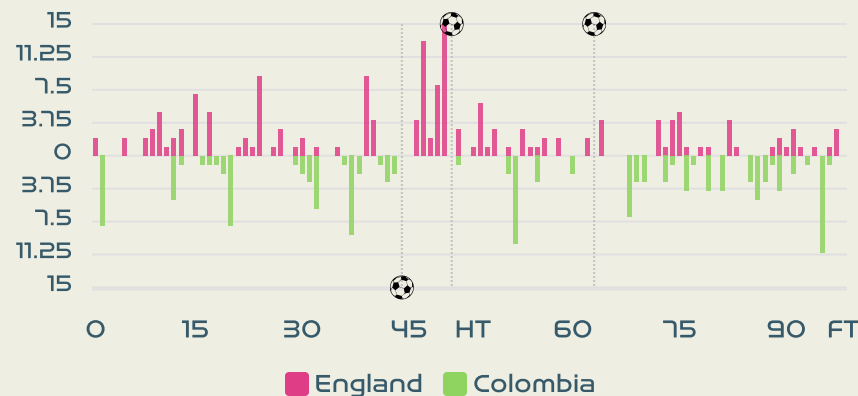
STARTING

↓ 68'	PEREZ Catalina	GK	1	
	VANEGAS Manuela	DF	2	
	ARIAS Daniela	DF	3	
↓ 78'	OSPINA GARCIA Diana	MF	4	
	BEDOYA DURANGO Lorena	MF	5	
	RAMIREZ Mayra	FW	9	
⚽ 44'	SANTOS Leicy	MF	10	
	(C) USME Catalina	FW	11	
↓ 10'	ARIAS Carolina	DF	17	
	CAICEDO Linda	FW	18	
	CARABALI Jorelyn	DF	19	

SUBSTITUTES

	SEPULVEDA Sandra	GK	12	
↑ 68'	GIRALDO Natalia	GK	13	
	MONTOYA Daniela	MF	6	
	REYES Maria Camila	MF	7	
	RESTREPO Marcela	MF	8	
	BARON Angela	DF	14	
↑ 10'	GUZMAN Ana	DF	15	
	ANDRADE Lady	MF	16	
	RAMOS Monica	DF	20	
↑ 78'	CHACON Ivonne	FW	21	
	CARACAS Daniela	DF	22	
	BAHR Elexa	FW	23	

Distribution in the Final Third



Match Summary - Key Statistics



Possession

Total	50%	14.1%	35.9%	Total
2	Goals			1
9 (5)	Attempts at Goal (On Target)			15 (2)
522 (443)	Total Passes (Complete)			339 (256)
85 %	Pass Completion %			76 %
101	Completed Line Breaks			73
10	Defensive Line Breaks			9
135	Receptions in the Final Third			125
14	Crosses			16
22	Ball Progressions			14
215 (75)	Defensive Pressures Applied (Direct Pressures)			256 (62)
80	Forced Turnovers			83
81	Second Balls			84
107.8 km	Total Distance Covered			102.5 km
4.6 km	Zone 4 - Low Speed Sprinting: 19-23km/h			4.3 km



England

Phases of Play

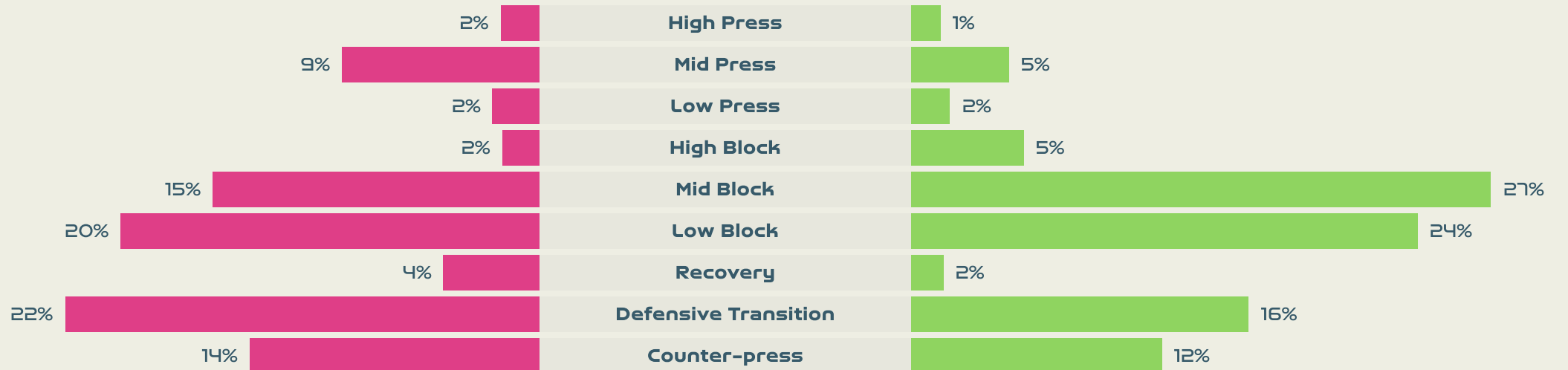
Colombia



IN POSSESSION



OUT OF POSSESSION





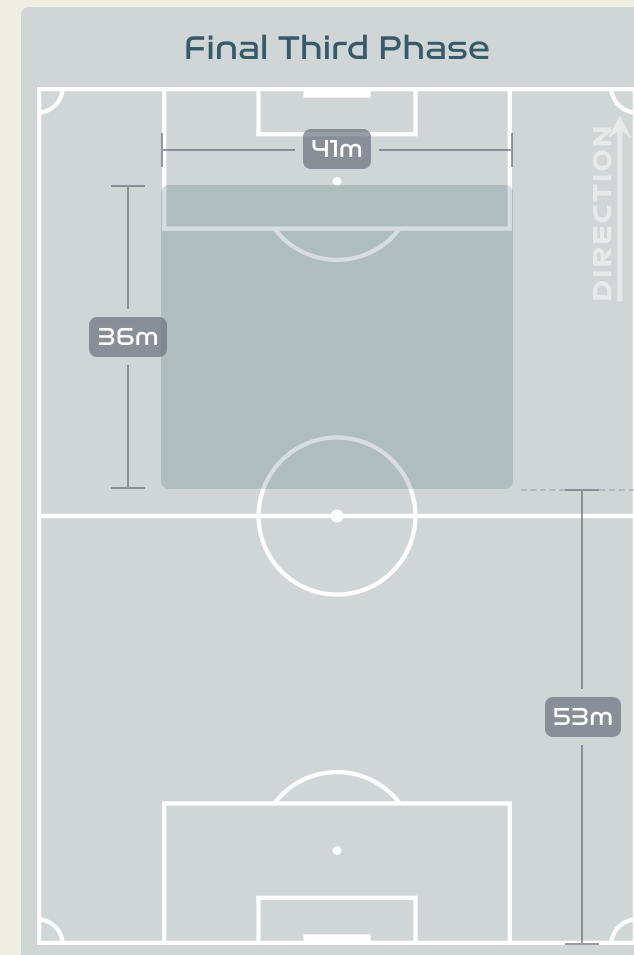
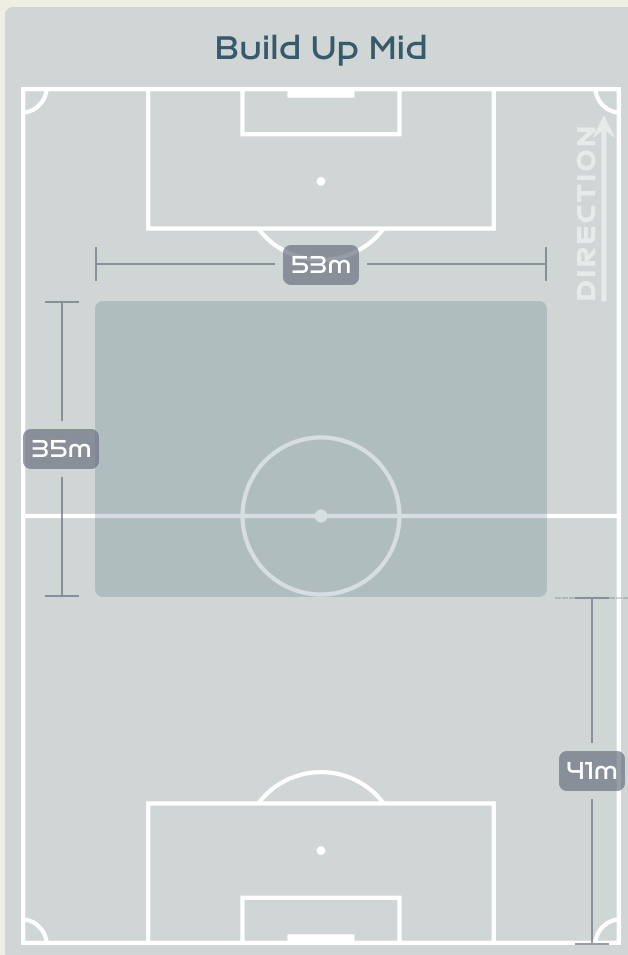
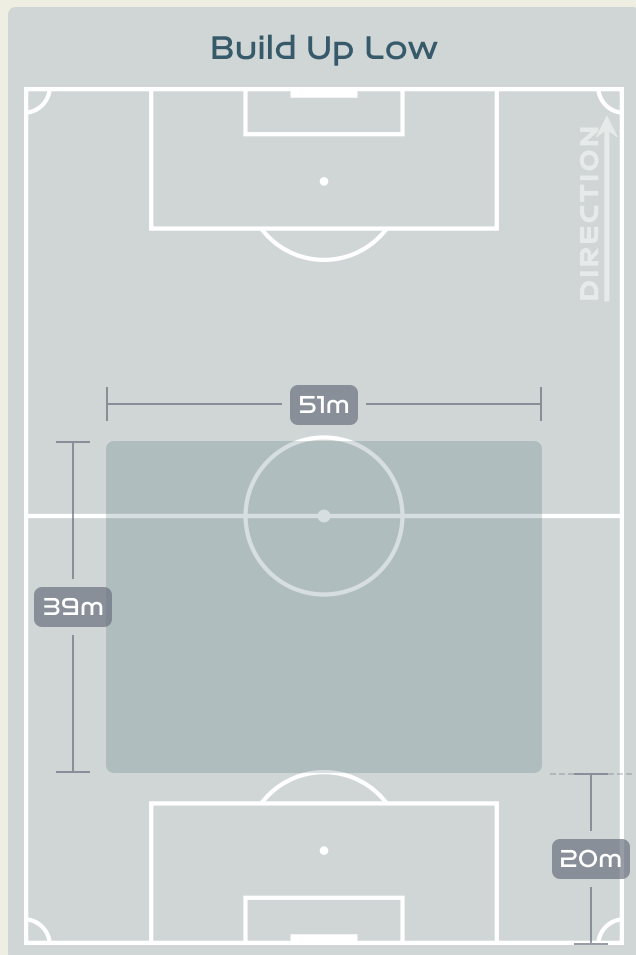
IN POSSESSION



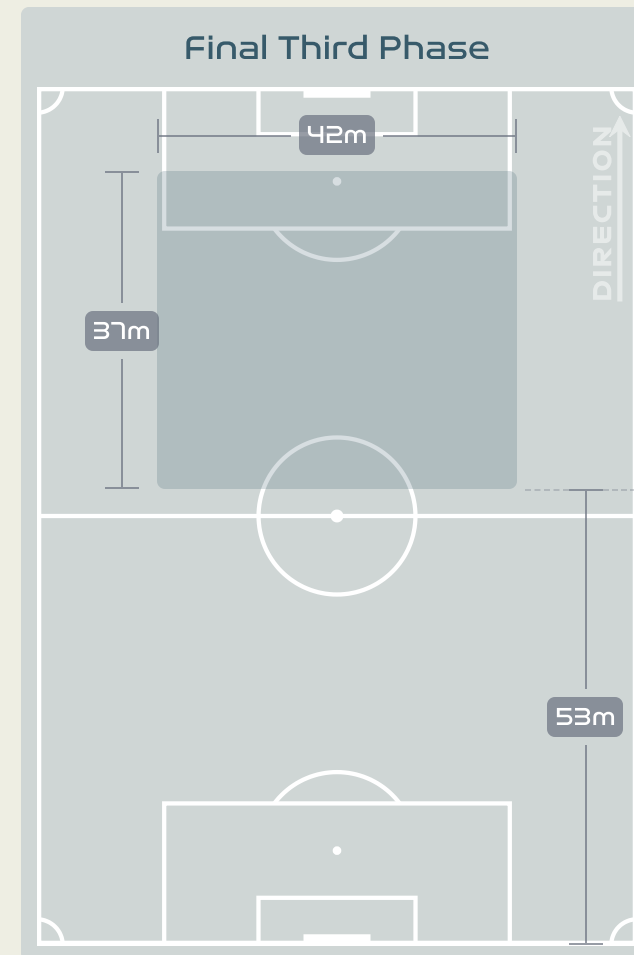
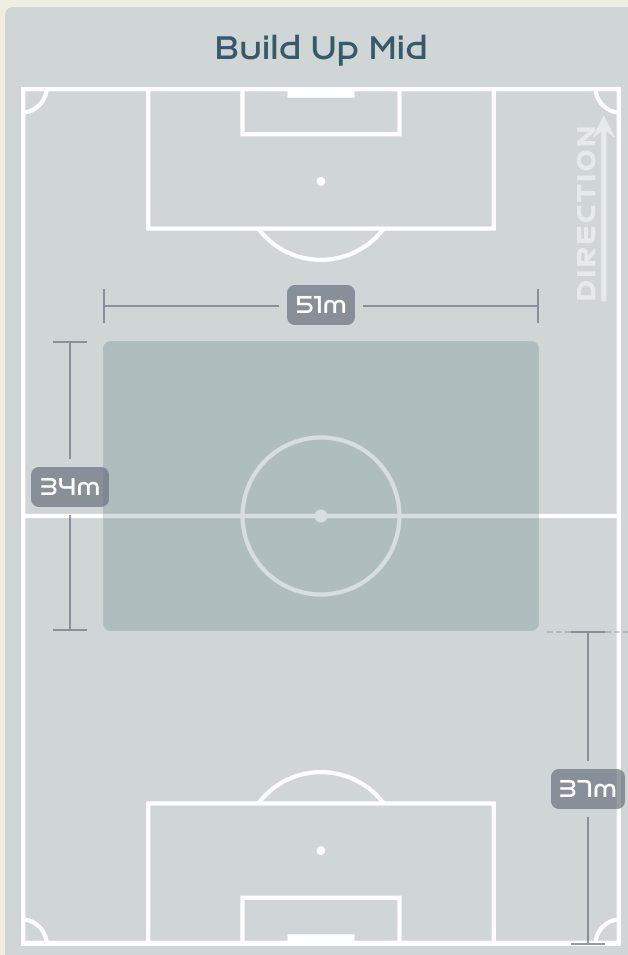
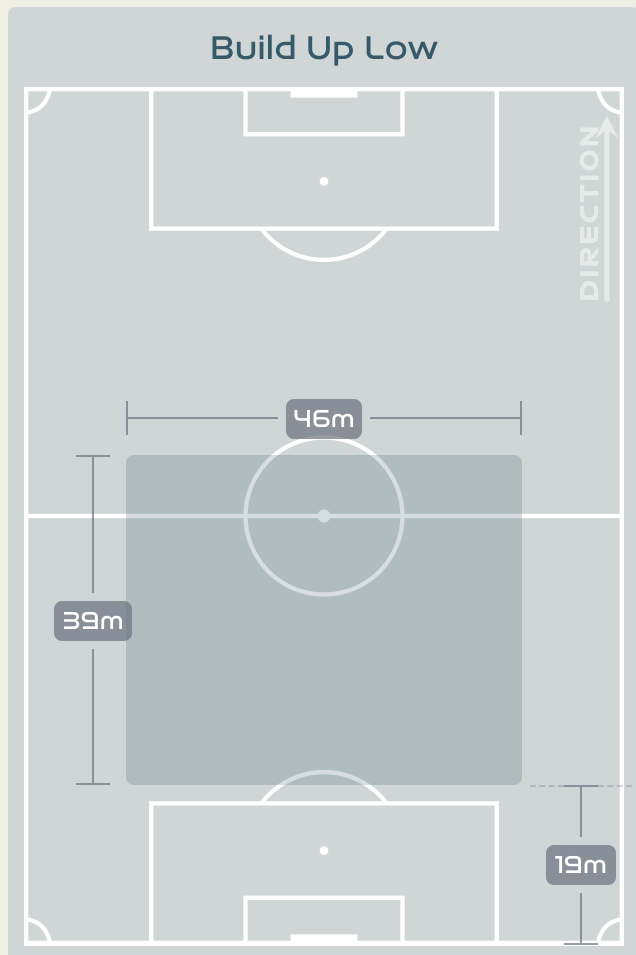
England v Colombia



In Possession Line Height & Team Length



In Possession Line Height & Team Length

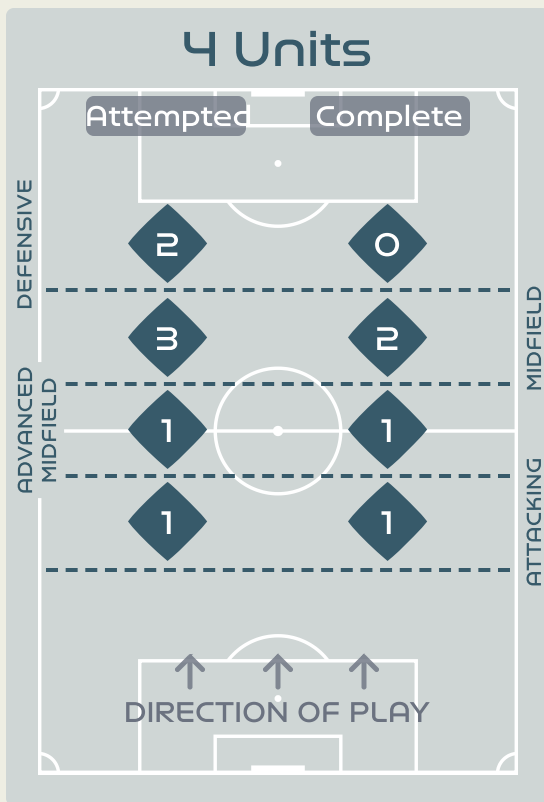
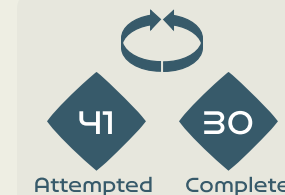
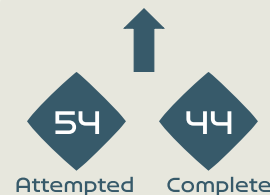


Line Breaks

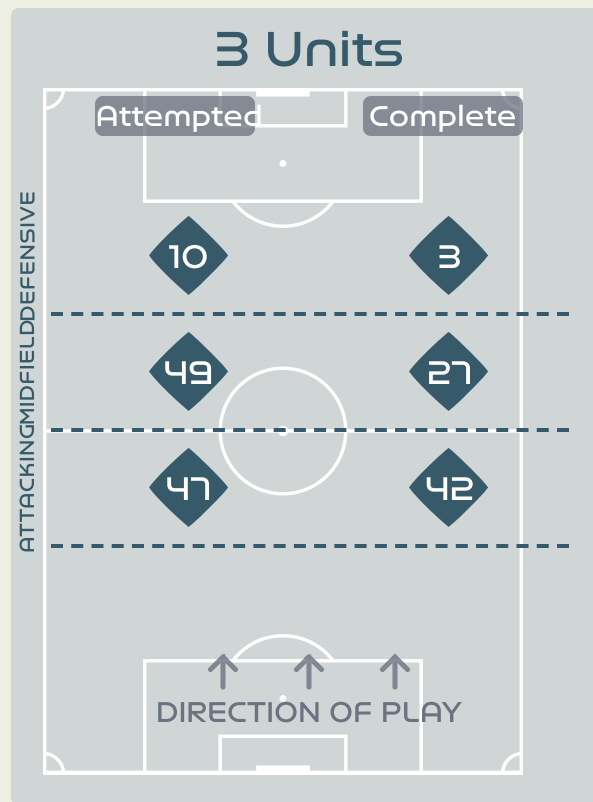


Attempted Line Breaks

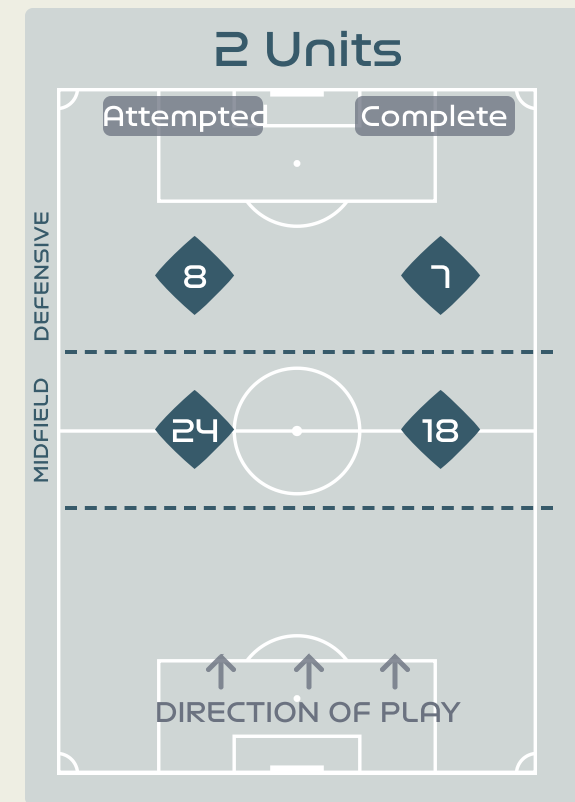
145



Attempted Line Breaks	7
Inside Shape	4
Outside Shape	3



Attempted Line Breaks	106
Inside Shape	60
Outside Shape	46



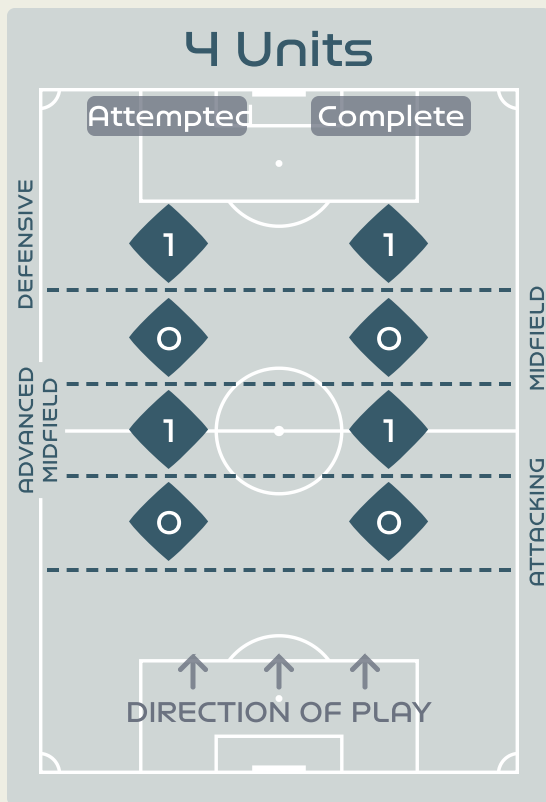
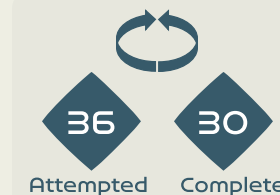
Attempted Line Breaks	32
Inside Shape	18
Outside Shape	14

Line Breaks



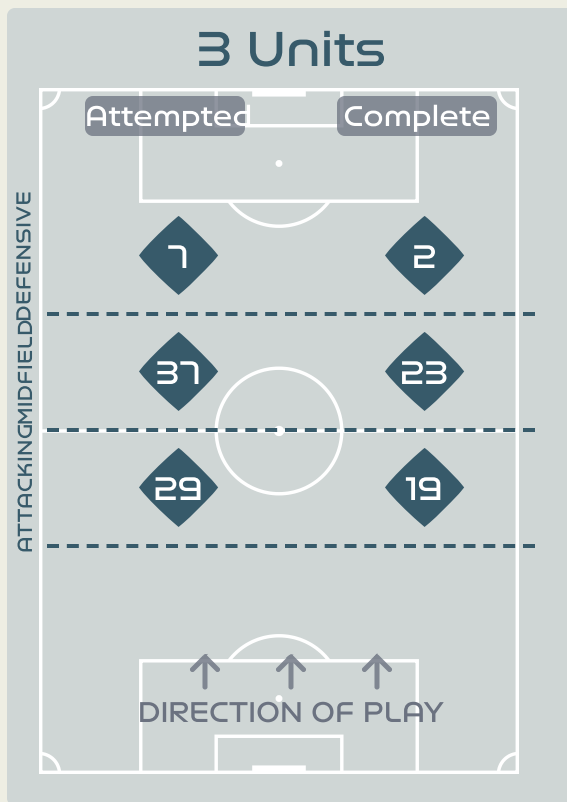
Attempted Line Breaks

117



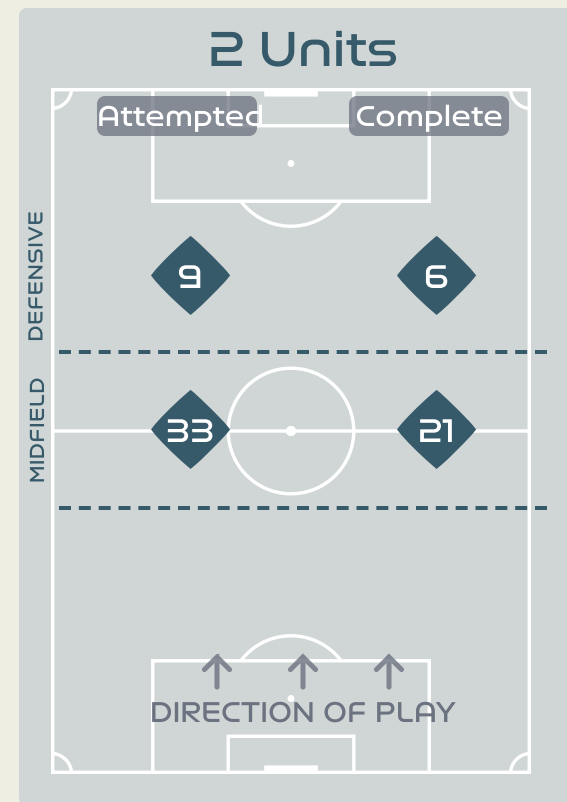
Attempted Line Breaks 2

Inside Shape 1
Outside Shape 1



Attempted Line Breaks 73

Inside Shape 47
Outside Shape 26



Attempted Line Breaks 42

Inside Shape 23
Outside Shape 19

Passing Networks



#	Passes From ↓ to →	EARPS Mary	BRONZE Lucy	WALSH Keira	GREENWOOD Alex	BRIGHT Millie	STANWAY Georgia	DALY Rachel	TOONE Ella	HEMP Lauren	CARTER Jessica	RUSSO Alessia	KELLY Chloe	ENGLAND Beth
1	EARPS Mary		2	1	5	6	1	1	0	0	4	0	1	0
2	BRONZE Lucy	0		6	0	1	7	0	0	6	6	5	1	0
4	WALSH Keira	0	4		16	6	5	3	12	2	4	2	2	0
5	GREENWOOD Alex	2	2	12		21	3	10	9	5	0	3	0	0
6	BRIGHT Millie	2	2	5	24		16	2	0	3	8	3	0	0
8	STANWAY Georgia	0	15	3	3	3		3	6	2	2	3	1	0
9	DALY Rachel	0	0	6	7	8	1		6	3	0	0	0	0
10	TOONE Ella	0	0	7	3	0	4	15		3	0	2	1	0
11	HEMP Lauren	0	4	2	1	1	2	5	2		0	1	0	0
16	CARTER Jessica	4	5	5	1	17	3	1	1	0		1	0	0
23	RUSSO Alessia	0	3	3	2	0	2	0	1	2	1		0	0
18	KELLY Chloe	0	1	1	0	0	0	0	0	0	0	0		0
19	ENGLAND Beth	0	0	0	0	0	0	0	0	0	0	0	1	

Top 5 Player to Player Passers		
Player	Passed To	% of Total Team Passes
BRIGHT Millie	GREENWOOD Alex	5.7%
GREENWOOD Alex	BRIGHT Millie	5%
CARTER Jessica	BRIGHT Millie	4%
WALSH Keira	GREENWOOD Alex	3.8%
BRIGHT Millie	STANWAY Georgia	3.8%

Passing Networks

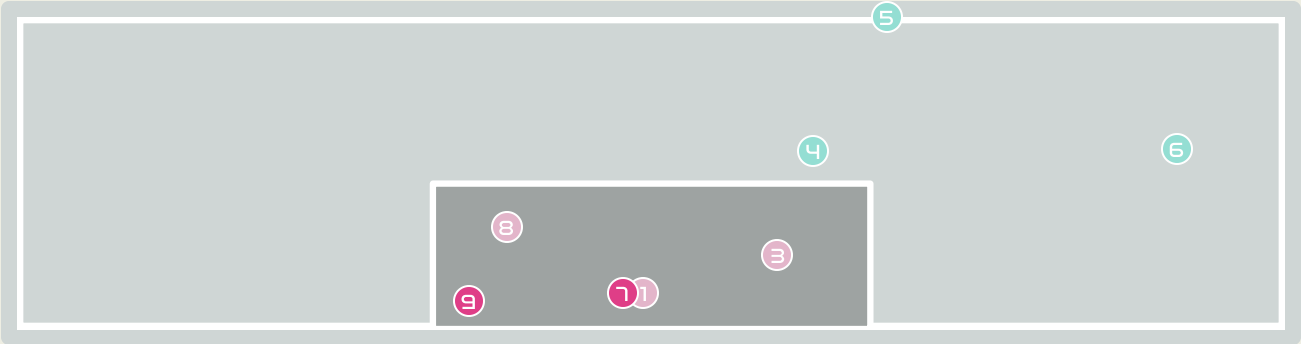
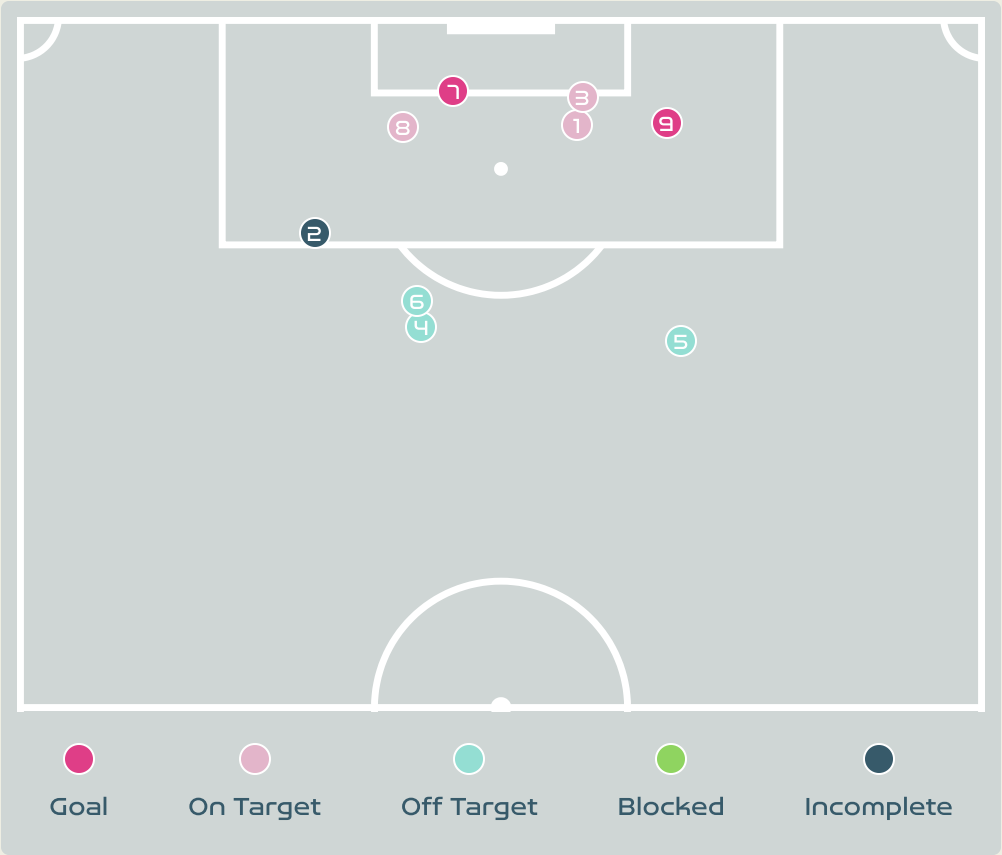
Colombia 

#	Passes From ↓ to →	PEREZ Catalina	VANEGAS Manuela	ARIAS Daniela	OSPINA GARCIA Diana	BEDOYA DURANGO Lorena	RAMIREZ Mayra	SANTOS Leicy	USME Catalina	ARIAS Carolina	CAICEDO Linda	CARABALI Jorelyn	GIRALDO Natalia	GUZMAN Ana	CHACON Ivonne
1	PEREZ Catalina		1	0	0	0	1	0	0	0	0	0	0	0	0
2	VANEGAS Manuela	0		2	1	1	2	10	0	0	7	0	0	0	0
3	ARIAS Daniela	0	3		0	1	0	0	0	0	0	5	0	3	0
4	OSPINA GARCIA Diana	0	2	1		4	2	3	2	1	3	0	0	0	0
5	BEDOYA DURANGO Lorena	0	2	0	2		1	5	1	0	4	1	0	0	3
9	RAMIREZ Mayra	0	0	0	1	2		4	5	0	0	1	0	2	0
10	SANTOS Leicy	0	5	1	4	1	4		5	0	12	3	0	3	2
11	USME Catalina	0	3	0	1	4	0	5		3	2	3	0	6	1
17	ARIAS Carolina	0	0	0	1	0	0	0	1		0	0	0	0	0
18	CAICEDO Linda	0	9	1	0	1	1	8	2	0		1	0	1	2
19	CARABALI Jorelyn	0	1	3	0	0	1	3	3	0	1		2	7	0
13	GIRALDO Natalia	0	1	1	0	0	0	0	0	0	0	0		0	0
15	GUZMAN Ana	0	0	0	0	0	2	5	1	0	1	5	0		0
21	CHACON Ivonne	0	0	0	0	1	0	1	1	0	1	0	0	1	

Top 5 Player to Player Passers		
Player	Passed To	% of Total Team Passes
SANTOS Leicy	CAICEDO Linda	5.3%
VANEGAS Manuela	SANTOS Leicy	4.4%
CAICEDO Linda	VANEGAS Manuela	4%
CAICEDO Linda	SANTOS Leicy	3.5%
VANEGAS Manuela	CAICEDO Linda	3.1%



Attempts at Goal



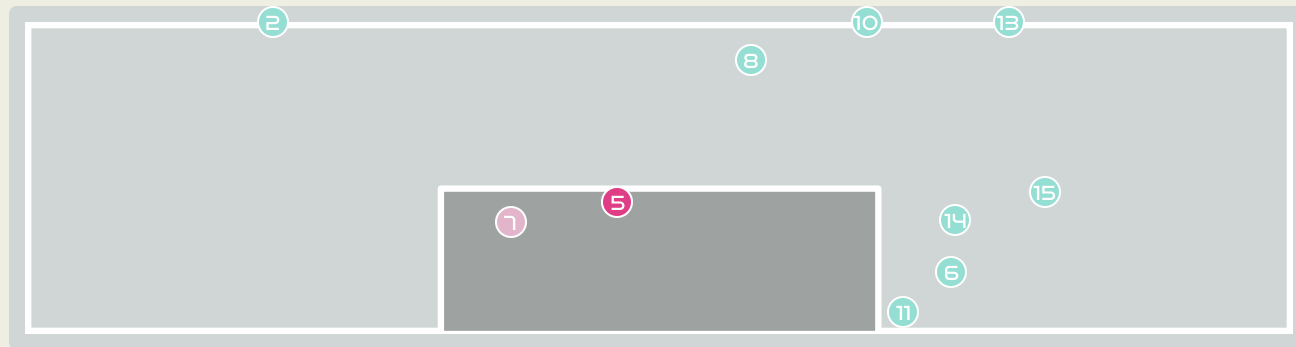
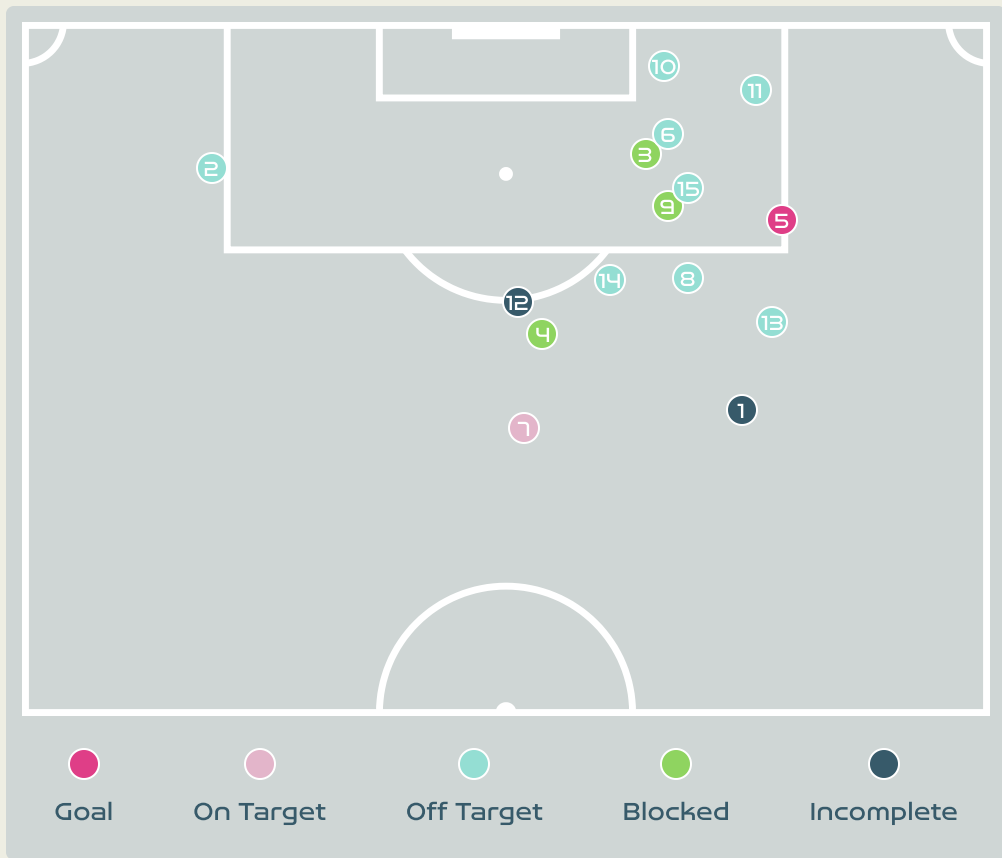
Key	Outcome	Shots
●	Goals	2
●	On Target	3
●	Off Target	3
●	Blocked	0
●	Incomplete	1






Attempts at Goal



Time	Player	Outcome	Body Part	Delivery Type
10	23RUSSO Alessia	On Target - Saved	Head	Cross
26	8 STANWAY Georgia	Incomplete	Right Foot	Loose Ball
26	9 DALY Rachel	On Target - Saved	Head	Loose Ball
27	9 DALY Rachel	Off Target	Right Foot	Pass
29	4 WALSH Keira	Off Target	Right Foot	Loose Ball
49	4 WALSH Keira	Off Target	Right Foot	Loose Ball
50	11 HEMP Lauren	On Target - Goal	Left Foot	Loose Ball
51	9 DALY Rachel	On Target - Saved	Head	Corner
62	23RUSSO Alessia	On Target - Goal	Right Foot	Loose Ball

Attempts at Goal



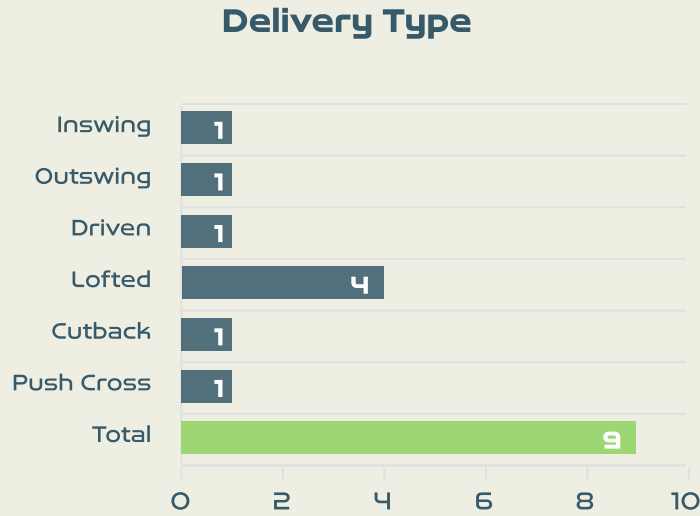
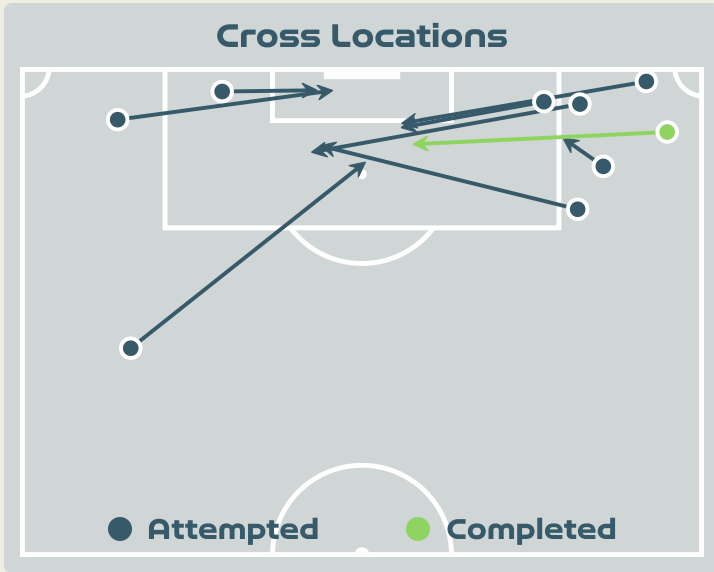
Key	Outcome	Shots
	Goals	1
	On Target	1
	Off Target	8
	Blocked	3
	Incomplete	2

Attempts at Goal

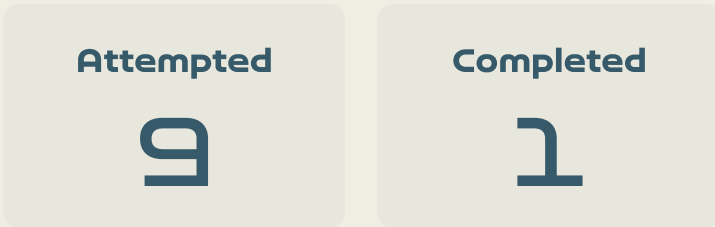
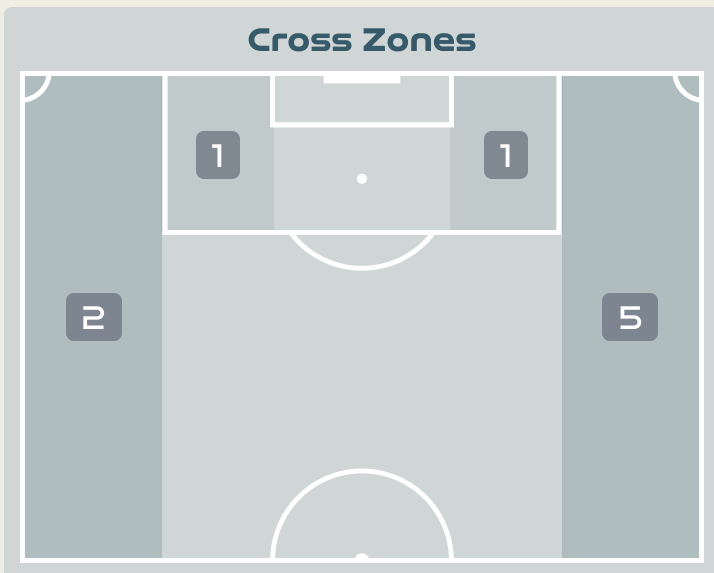
Time	Player	Outcome	Body Part	Delivery Type
12	11 USME Catalina	Incomplete - Defensive Event	Left Foot	Pass
14	18 CAICEDO Linda	Off Target	Right Foot	Ball Progression
37	18 CAICEDO Linda	Incomplete - Blocked	Right Foot	Loose Ball
43	4 OSPINA GARCIA Diana	Incomplete - Blocked	Right Foot	Pass
43	10 SANTOS Leicy	On Target - Goal	Right Foot	Pass
45	9 RAMIREZ Mayra	Off Target	Right Foot	Pass
70	5 BEDOYA DURANGO Lorena	On Target - Saved	Right Foot	Pass
70	5 BEDOYA DURANGO Lorena	Off Target	Right Foot	Loose Ball
81	21 CHACON Ivonne	Incomplete - Blocked	Right Foot	Pass
81	21 CHACON Ivonne	Deflected Off Target - Defensive Event	Right Foot	Loose Ball
86	10 SANTOS Leicy	Off Target - Saved	Right Foot	Pass
89	21 CHACON Ivonne	Incomplete - Defensive Event	Right Foot	Loose Ball
93	2 VANEGAS Manuela	Off Target	Left Foot	Other
95	9 RAMIREZ Mayra	Off Target	Right Foot	Loose Ball
96	18 CAICEDO Linda	Off Target	Right Foot	Pass



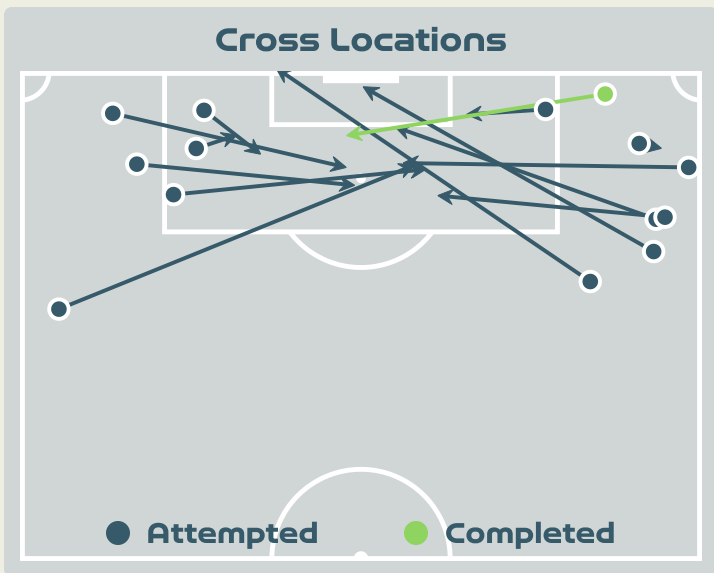
Crosses (Open Play)



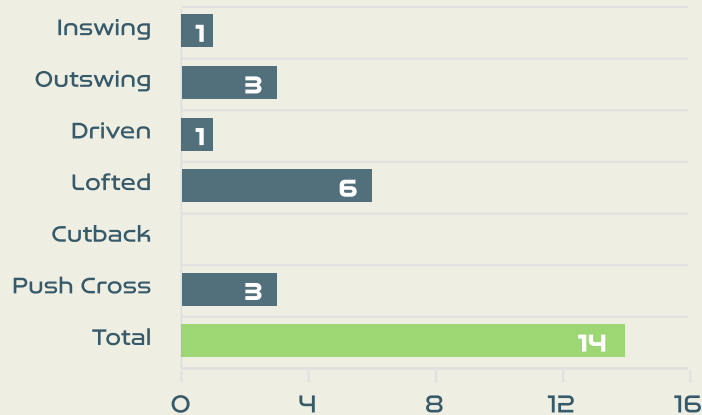
#	Player	Inswing	Outswing	Driven	Lofted	Cutback	Push Cross	Total Attempted
1	EARPS Mary	0	0	0	0	0	0	0
2	BRONZE Lucy	0	0	1	1	0	0	2
4	WALSH Keira	0	0	0	0	0	0	0
5	GREENWOOD Alex	0	0	0	0	0	0	0
6	BRIGHT Millie	0	0	0	0	0	0	0
8	STANWAY Georgia	0	0	0	0	0	0	0
9	DALY Rachel	1	0	0	0	0	0	1
10	TOONE Ella	0	0	0	0	0	0	0
11	HEMP Lauren	0	0	0	3	0	0	3
16	CARTER Jessica	0	0	0	0	0	0	0
23	RUSSO Alessia	0	1	0	0	1	1	3
18	KELLY Chloe	0	0	0	0	0	0	0
19	ENGLAND Beth	0	0	0	0	0	0	0



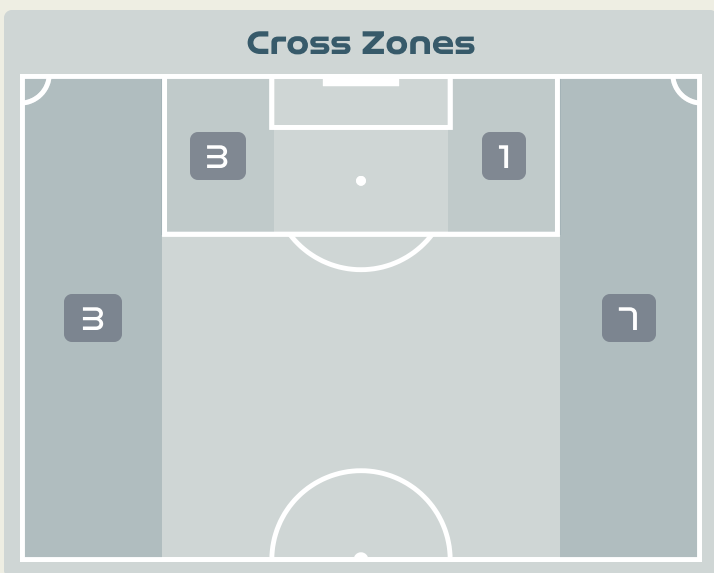
Crosses (Open Play)



Delivery Type



#	Player	Inswing	Outswing	Driven	Lofted	Cutback	Push Cross	Total Attempted
1	PEREZ Catalina	0	0	0	0	0	0	0
2	VANEGAS Manuela	0	0	0	2	0	0	2
3	ARIAS Daniela	0	0	0	0	0	0	0
4	OSPINA GARCIA Diana	0	0	0	0	0	0	0
5	BEDOYA DURANGO Lorena	0	0	0	0	0	0	0
9	RAMIREZ Mayra	0	0	1	0	0	0	1
10	SANTOS Leicy	0	0	0	1	0	2	3
11	USME Catalina	1	0	0	0	0	0	1
17	ARIAS Carolina	0	0	0	0	0	0	0
18	CAICEDO Linda	0	0	0	2	0	0	2
19	CARABALI Jorelyn	0	0	0	0	0	0	0
13	GIRALDO Natalia	0	0	0	0	0	0	0
15	GUZMAN Ana	0	3	0	1	0	1	5
21	CHACON Ivonne	0	0	0	0	0	0	0



Attempted

14

Completed

1

Most Crosses Attempted

5

GUZMAN Ana
BENCH



Offering to Receive

355

Total Offers Made

148

Total Offers Received

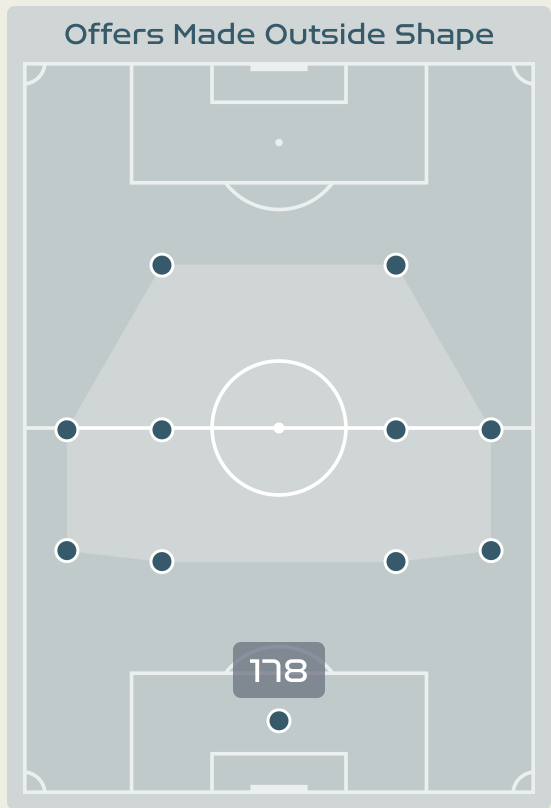
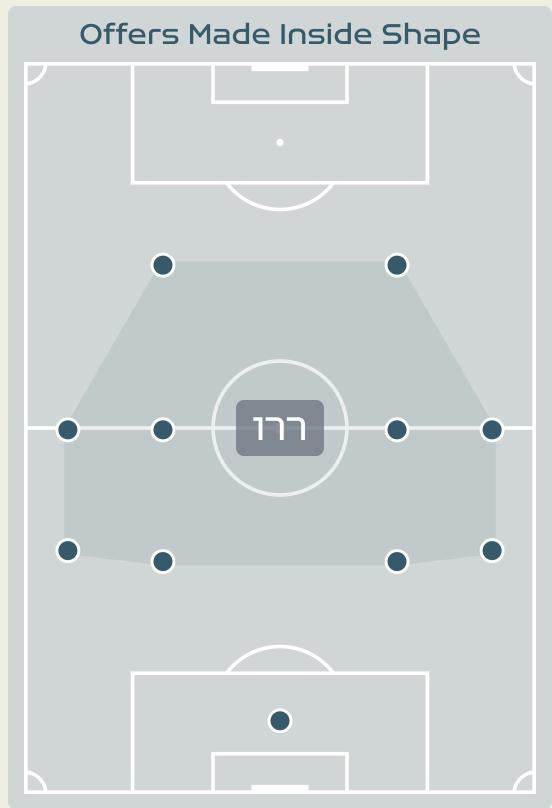
Most Offers

59

STANWAY Georgia
RIGHT CENTRE MIDFIELD

154

Offers Made in Final Third



175

Offers Made in Middle Third

26

Offers Made in Defensive Third

#	Player	Offers Made	Offers Received	% Made & Received
1	EARPS Mary	6	3	50%
2	BRONZE Lucy	44	16	36.4%
4	WALSH Keira	42	26	61.9%
5	GREENWOOD Alex	5	4	80%
6	BRIGHT Millie	10	5	50%
8	STANWAY Georgia	59	29	49.2%
9	DALY Rachel	37	17	45.9%
10	TOONE Ella	40	14	35%
11	HEMP Lauren	52	15	28.8%
16	CARTER Jessica	11	5	45.5%
23	RUSSO Alessia	40	11	27.5%
18	KELLY Chloe	6	2	33.3%
19	ENGLAND Beth	3	1	33.3%



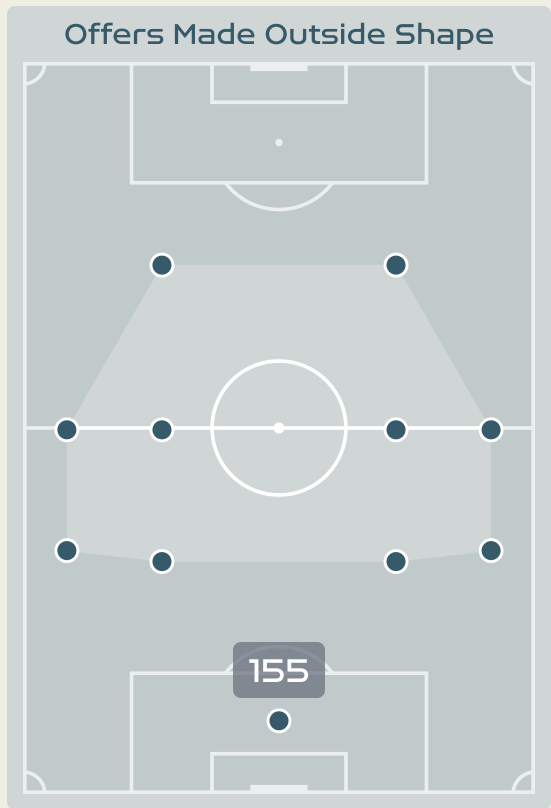
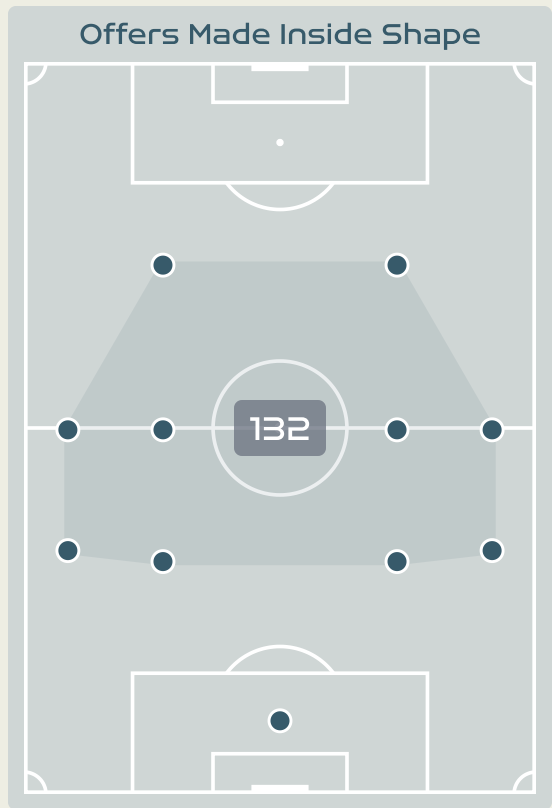
Offering to Receive

287
Total Offers Made

98
Total Offers Received

74
VANEGAS Manuela
LEFT BACK

129
Offers Made in Final Third



118
Offers Made in Middle Third

40
Offers Made in Defensive Third

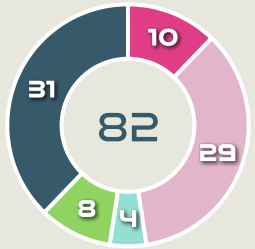
#	Player	Offers Made	Offers Received	% Made & Received
1	PEREZ Catalina	4	0	0%
2	VANEGAS Manuela	74	21	28.4%
3	ARIAS Daniela	13	6	46.2%
4	OSPINA GARCIA Diana	6	2	33.3%
5	BEDOYA DURANGO Lorena	10	5	50%
9	RAMIREZ Mayra	32	8	25%
10	SANTOS Leicy	61	22	36.1%
11	USME Catalina	35	13	37.1%
17	ARIAS Carolina	3	1	33.3%
18	CAICEDO Linda	28	14	50%
19	CARABALI Jorelyn	1	1	100%
13	GIRALDO Natalia	0	0	0%
15	GUZMAN Ana	11	3	27.3%
21	CHACON Ivonne	9	2	22.2%



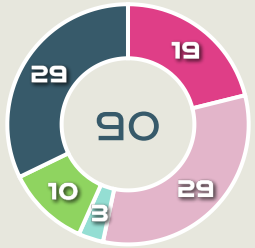
Movement to Receive

Movement Types by Phase

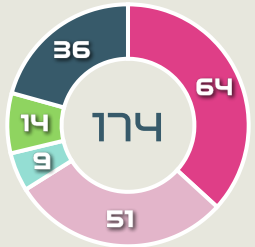
Final Third Phase



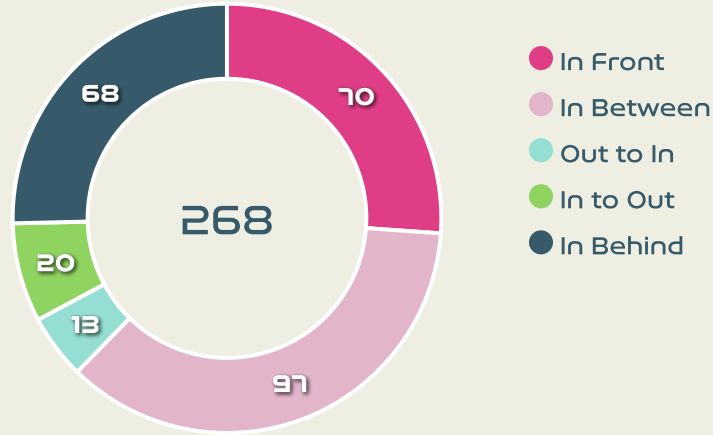
Progression Phase



Build Up Phase



All Movement Types

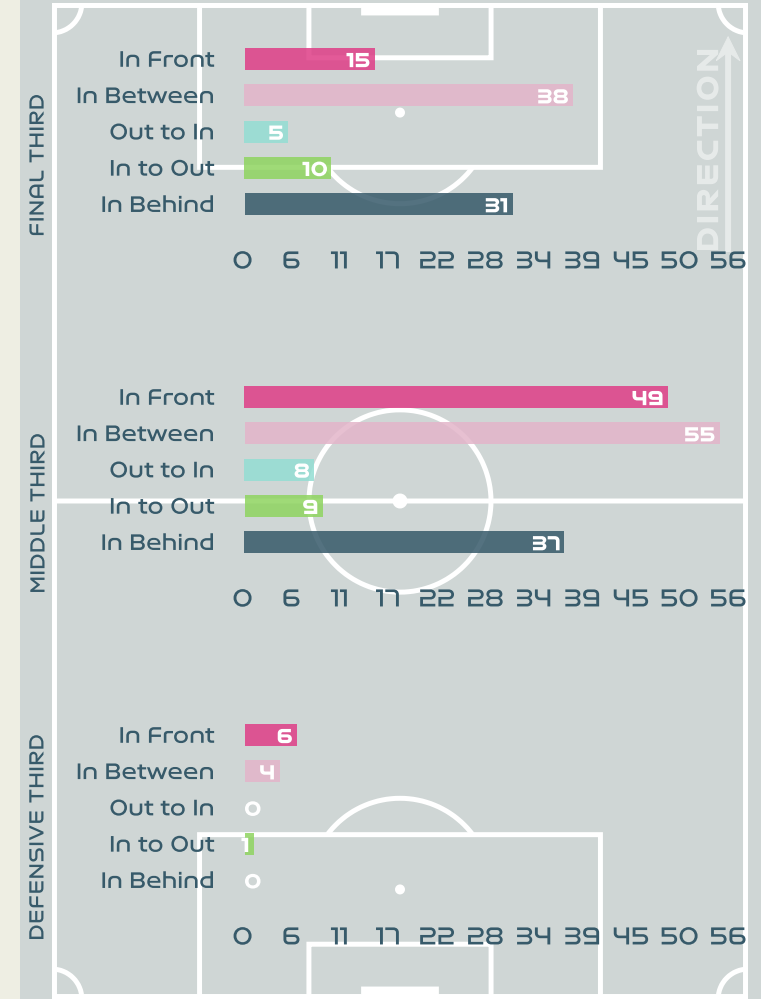


- In Front
- In Between
- Out to In
- In to Out
- In Behind

Top Ranked Players

Type	Player	Movements
In Front	4 WALSH Keira	31
In Between	23 RUSSO Alessia	23
Out to In	8 STANWAY Georgia	7
In to Out	8 STANWAY Georgia	9
In Behind	11 HEMP Lauren	25

Movement Types Pitch Third

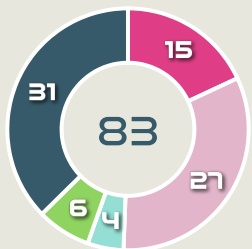




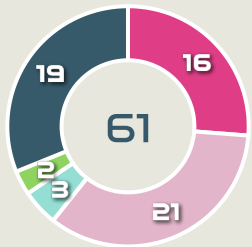
Movement to Receive

Movement Types by Phase

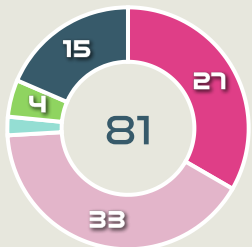
Final Third Phase



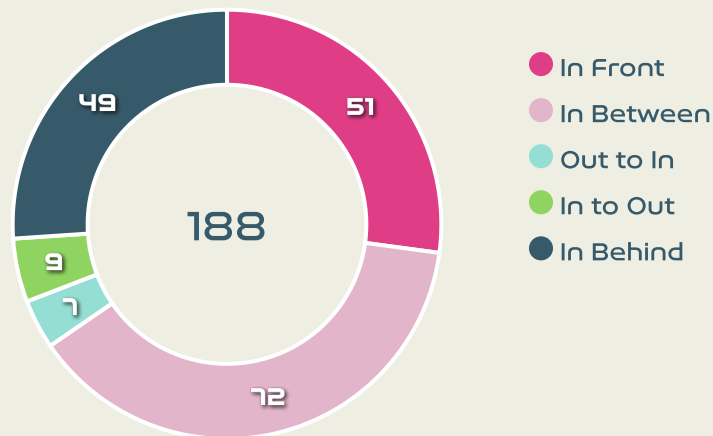
Progression Phase



Build Up Phase



All Movement Types

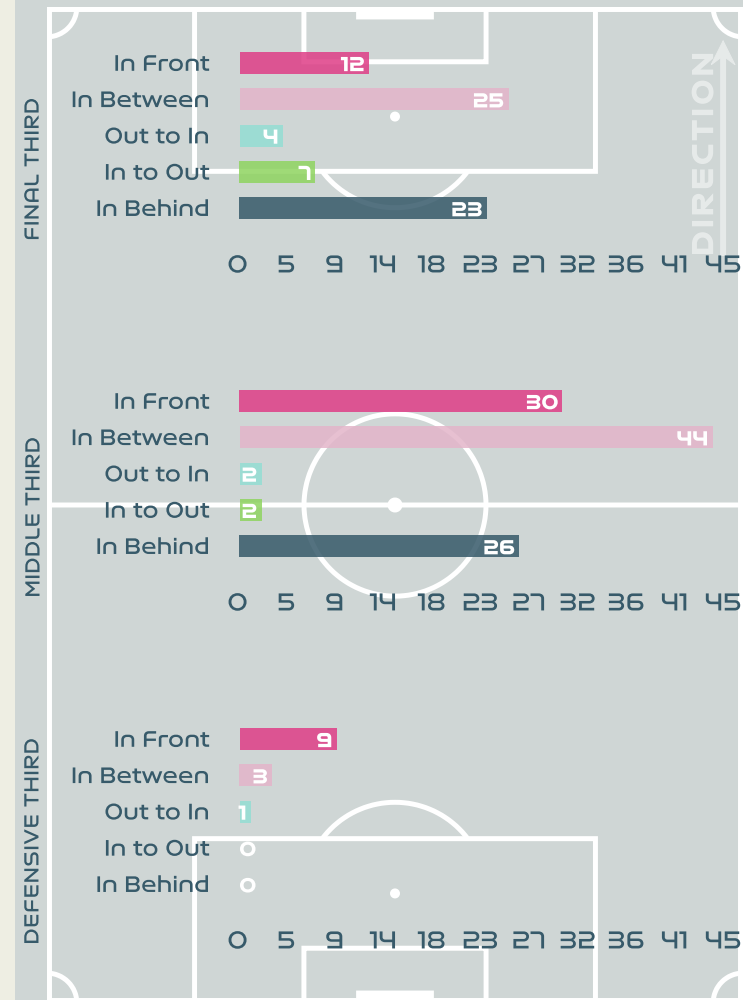


- In Front
- In Between
- Out to In
- In to Out
- In Behind

Top Ranked Players

Type	Player	Movements
In Front	2 VANEGAS Manuela	24
In Between	10 SANTOS Leicy	29
Out to In	10 SANTOS Leicy	3
In to Out	10 SANTOS Leicy	4
In Behind	9 RAMIREZ Mayra	16

Movement Types Pitch Third





OUT OF POSSESSION



England v Colombia





Defensive Actions

80

Forced Turnovers

43

Possession Regained

4

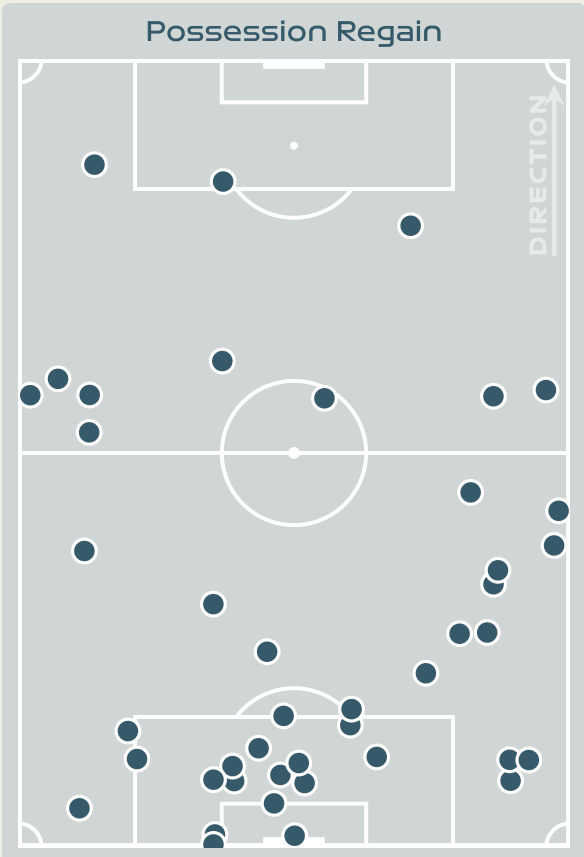
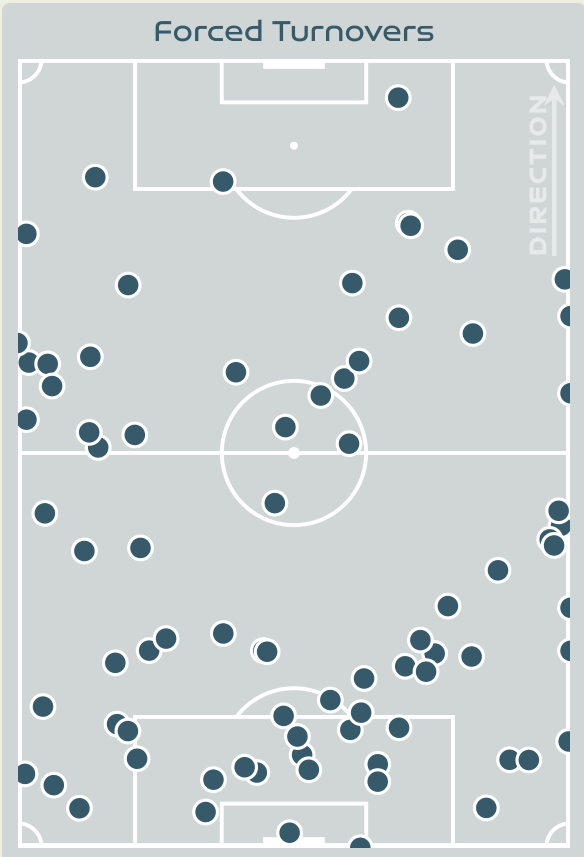
Interceptions

43

Tackles

3.86

Possession Actions / Defensive Action



Blocks



Possession Contests



Most Possession Regains

8

CARTER Jessica
RIGHT BACK

#	Player	Total Possession Regains
1	EARPS Mary	6
2	BRONZE Lucy	4
4	WALSH Keira	0
5	GREENWOOD Alex	4
6	BRIGHT Millie	3
8	STANWAY Georgia	4
9	DALY Rachel	4
10	TOONE Ella	3
11	HEMP Lauren	4
16	CARTER Jessica	8
23	RUSSO Alessia	2
18	KELLY Chloe	1
19	ENGLAND Beth	0



Defensive Actions

83

Forced Turnovers

55

Possession Regained

9

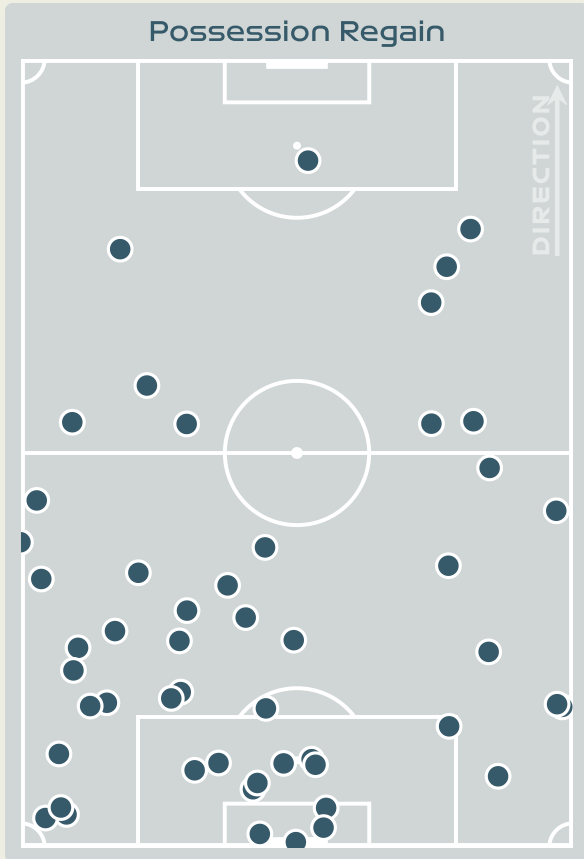
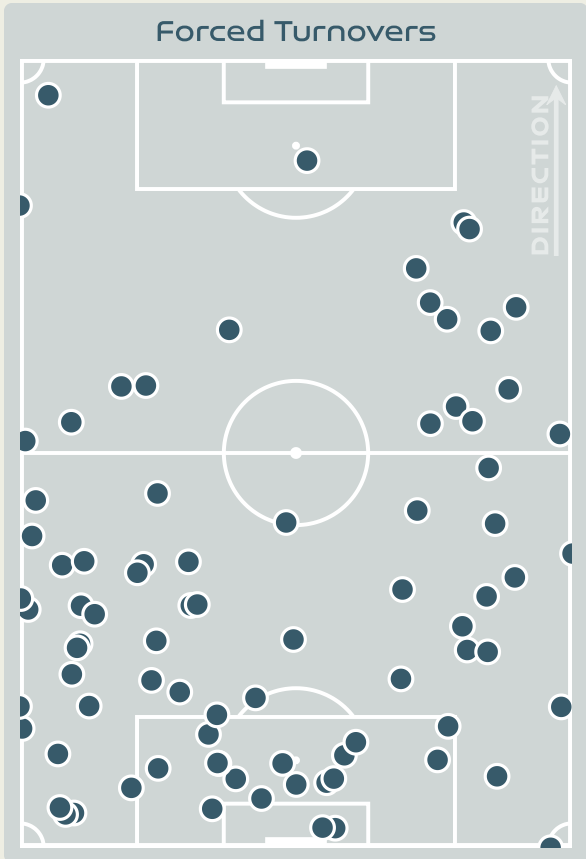
Interceptions

47

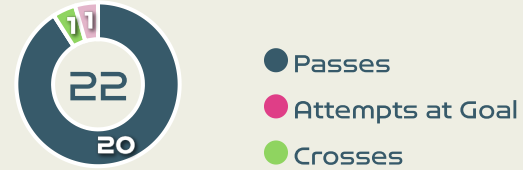
Tackles

2.8

Possession Actions / Defensive Action



Blocks



Possession Contests



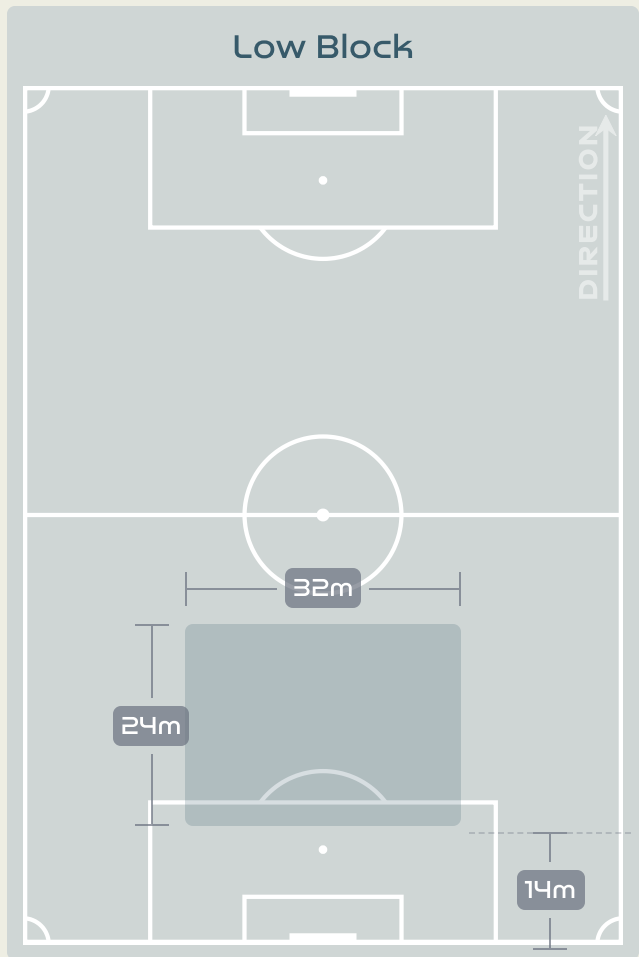
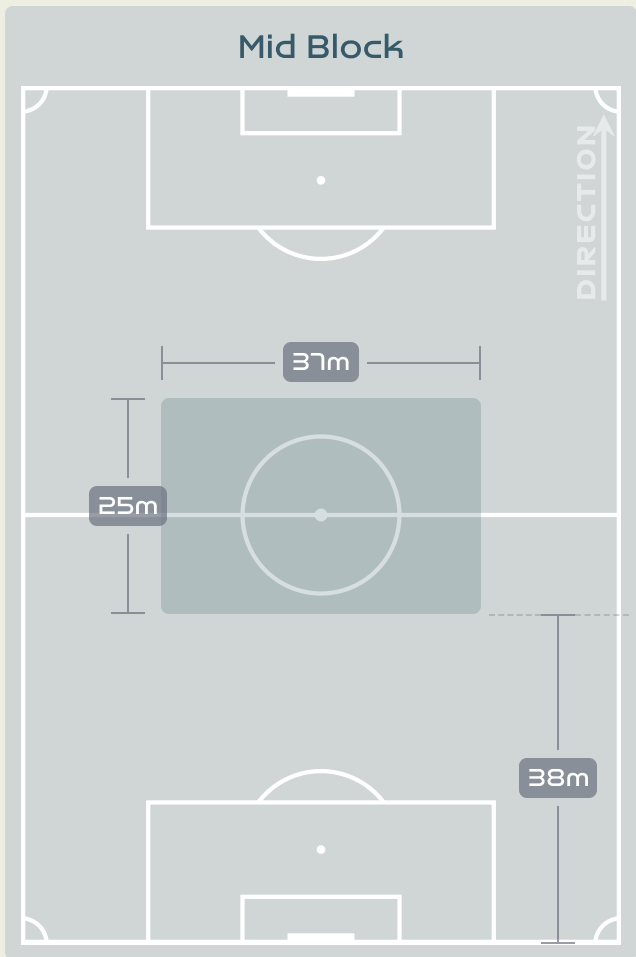
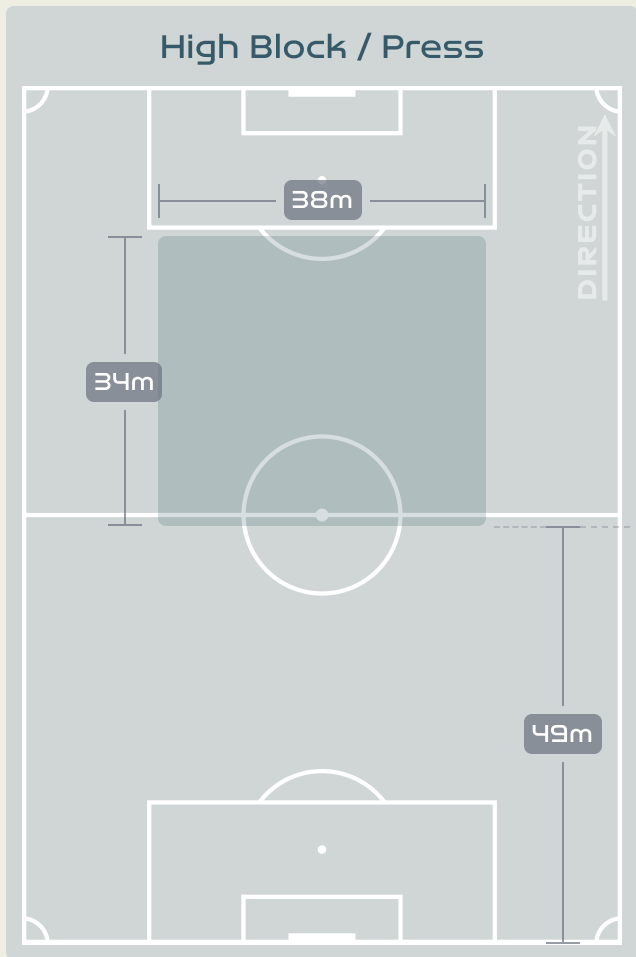
Most Possession Regains

9

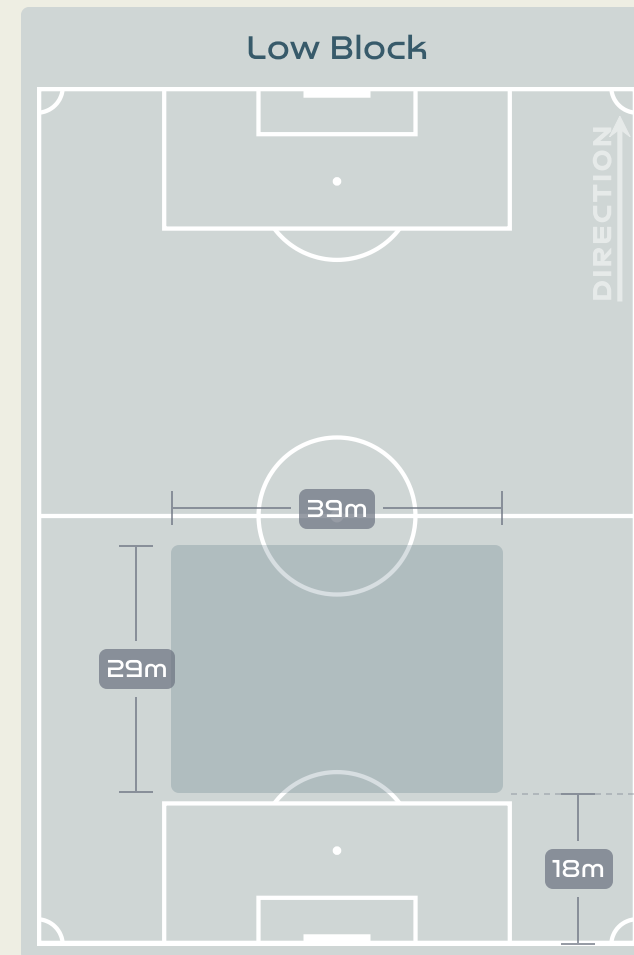
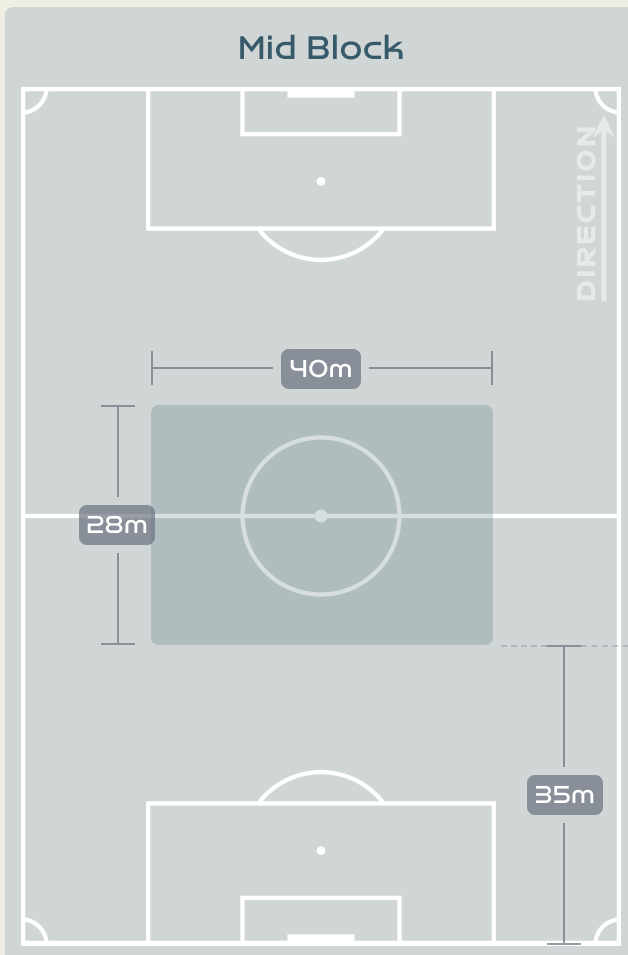
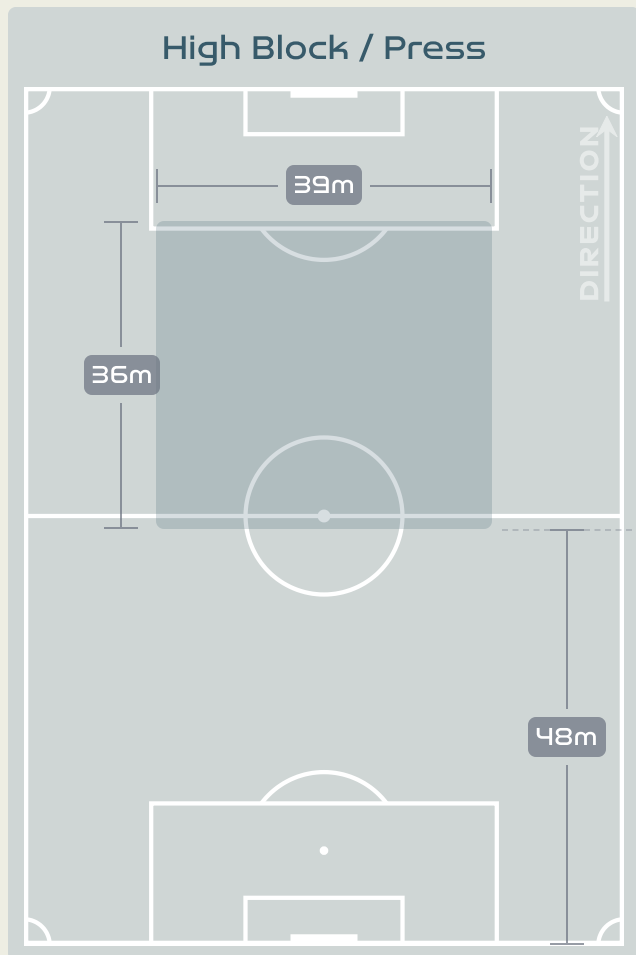
ARIAS Daniela
LEFT CENTRE BACK

#	Player	Total Possession Regains
1	PEREZ Catalina	4
2	VANEGAS Manuela	6
3	ARIAS Daniela	9
4	OSPINA GARCIA Diana	2
5	BEDOYA DURANGO Lorena	9
9	RAMIREZ Mayra	2
10	SANTOS Leicy	6
11	USME Catalina	4
17	ARIAS Carolina	0
18	CAICEDO Linda	3
19	CARABALI Jorelyn	2
13	GIRALDO Natalia	2
15	GUZMAN Ana	6
21	CHACON Ivonne	0

Defensive Line Height & Team Length



Defensive Line Height & Team Length



Defensive Pressure



England



215	Total Pressures	256
75	Direct Pressures	62
1.61s	Avg Pressure Duration	1.18s
80	Forced Turnovers	83
9.87s	Ball Recovery Time	10.34s
74	Pushing on into Pressing	88
156	Pushing on	186
38	Pressing Direction Inside	32
103	Pressing Direction Outside	132

Most Direct Pressures

10

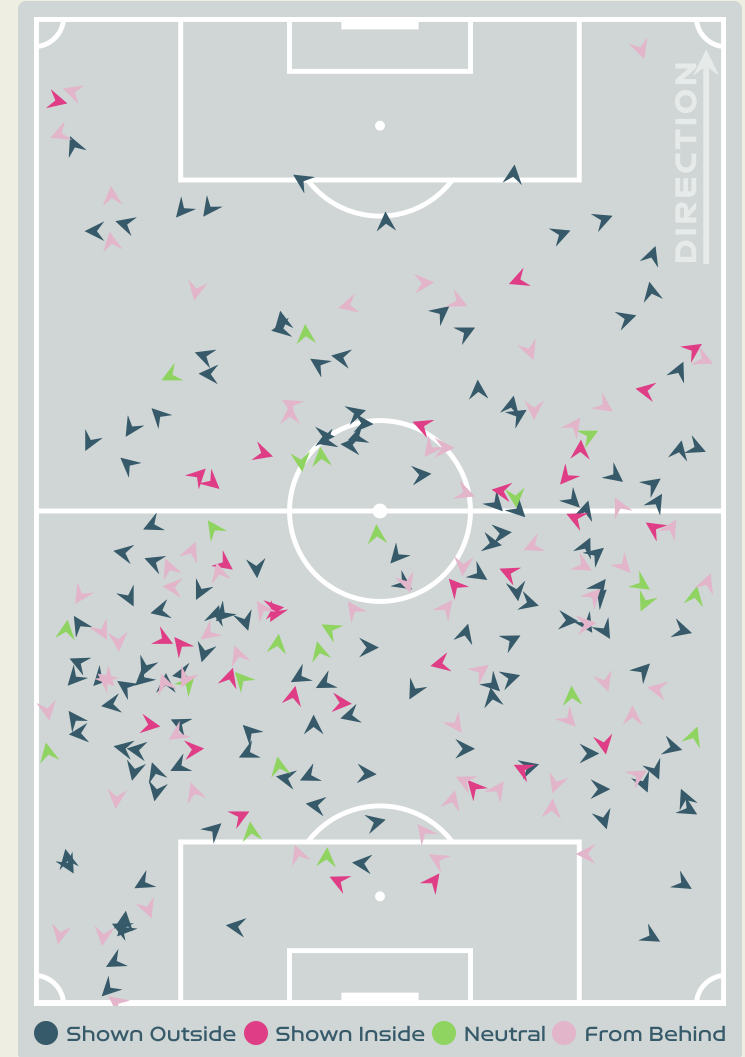
DALY Rachel
LEFT MIDFIELD

Most Direct Pressures

10

ARIAS Daniela
LEFT CENTRE BACK

Colombia



● Shown Outside ● Shown Inside ● Neutral ● From Behind



GOALKEEPING



England v Colombia

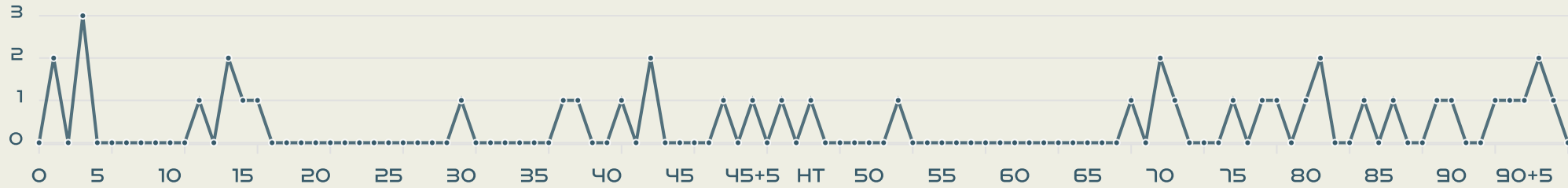


Goalkeeping Involvement



England

England GK Involvement Timeline



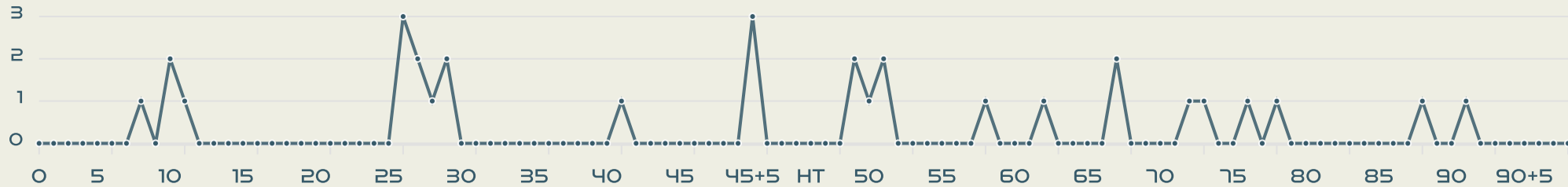
44

Total Involvements



Colombia

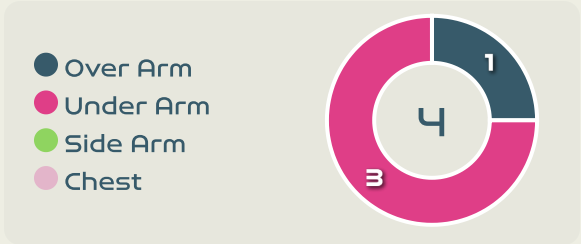
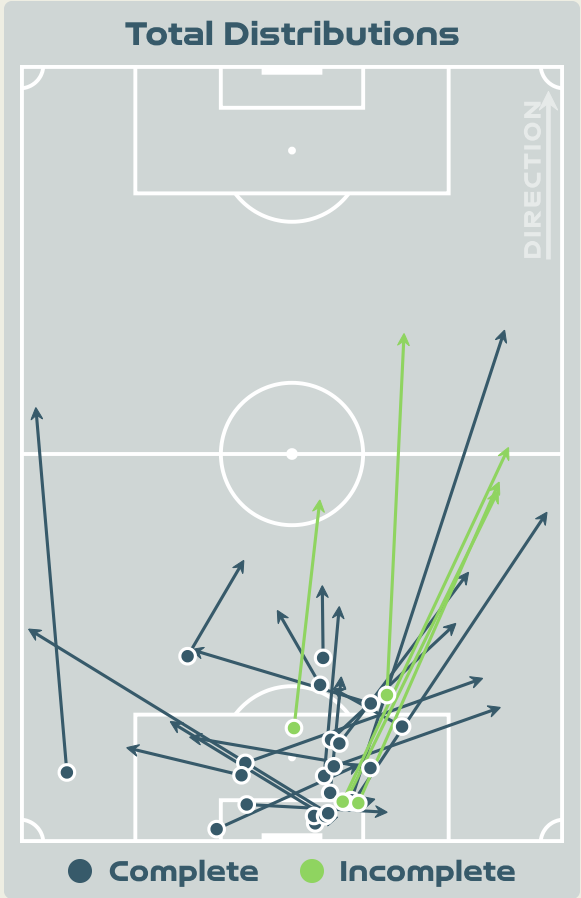
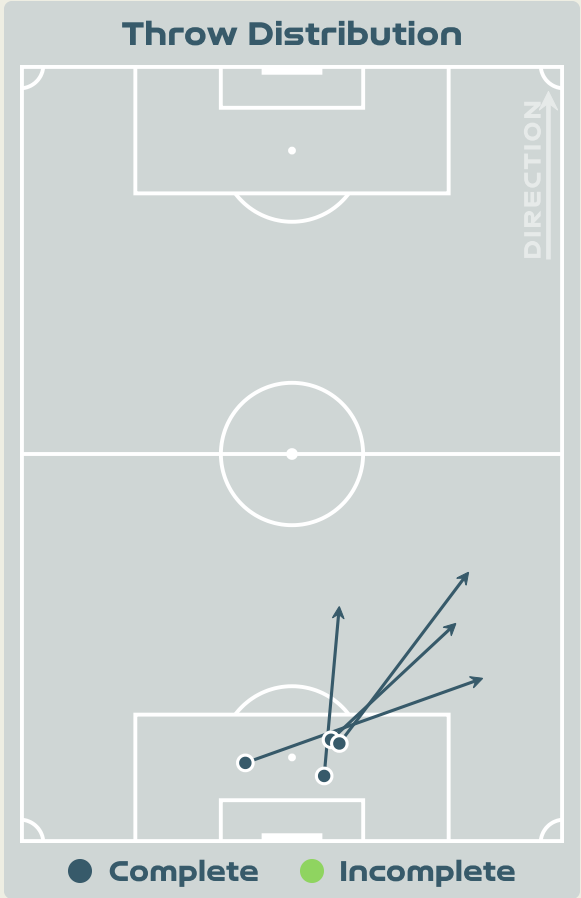
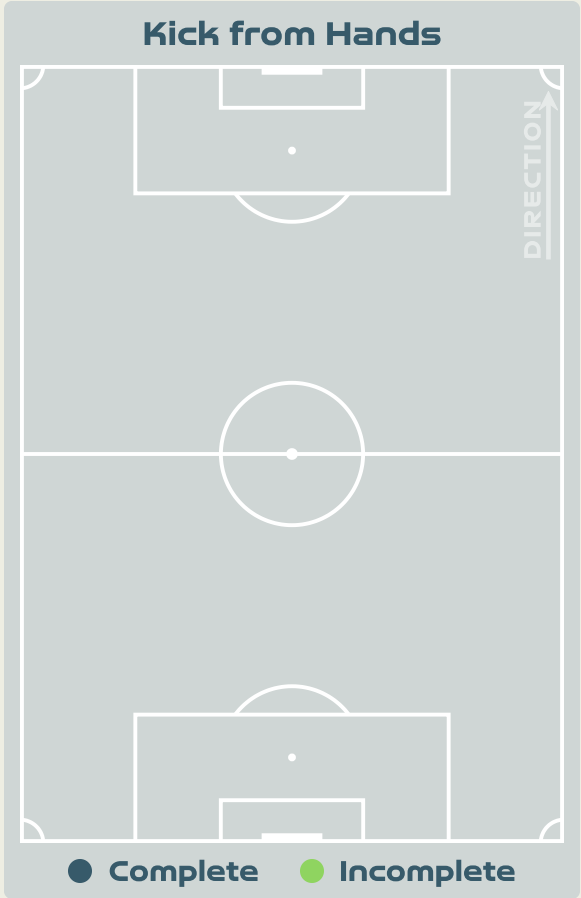
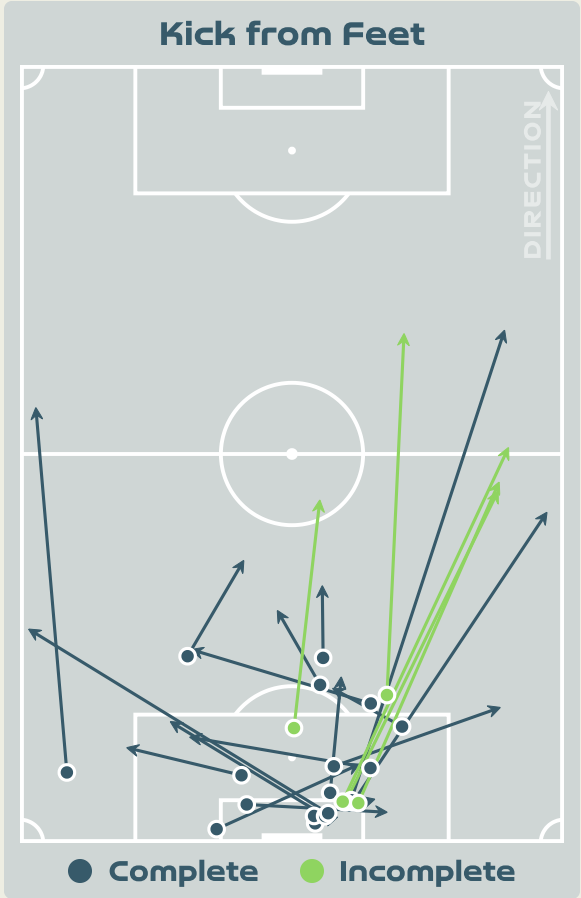
Colombia GK Involvement Timeline



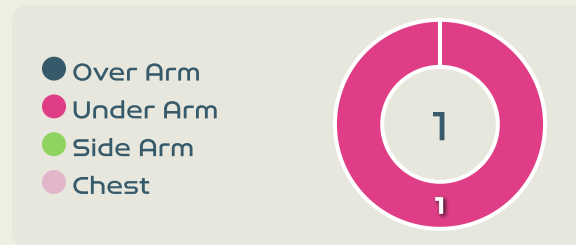
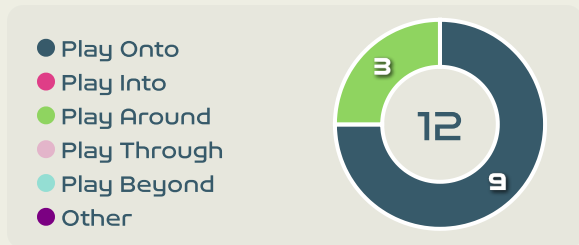
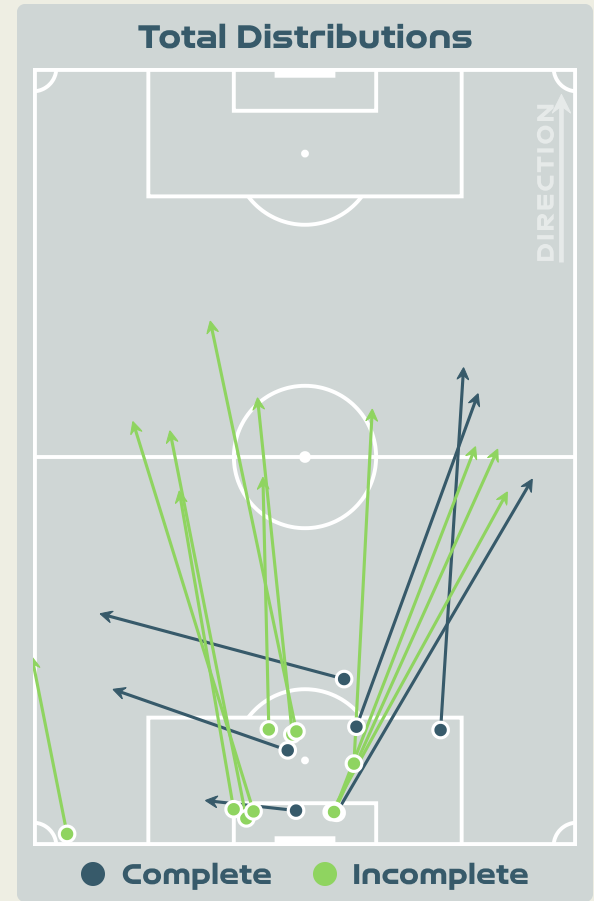
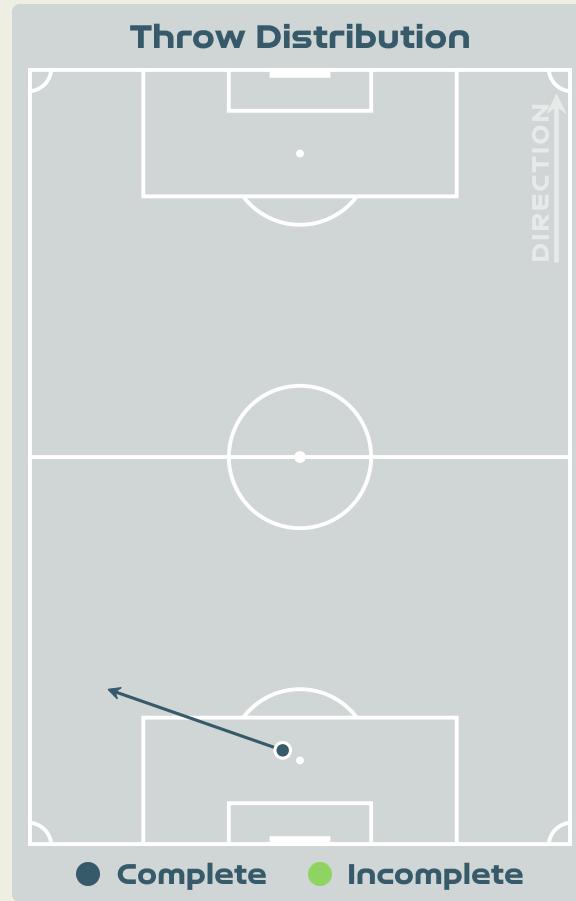
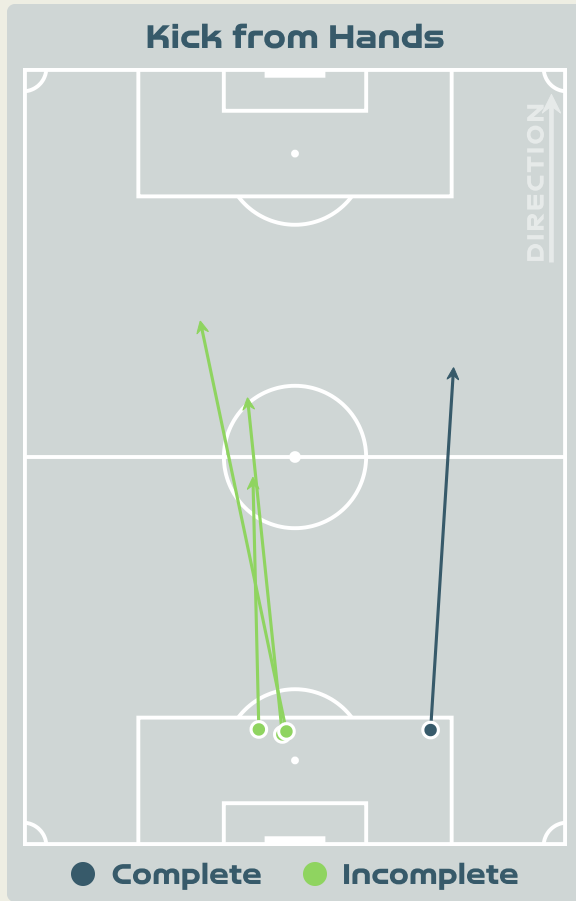
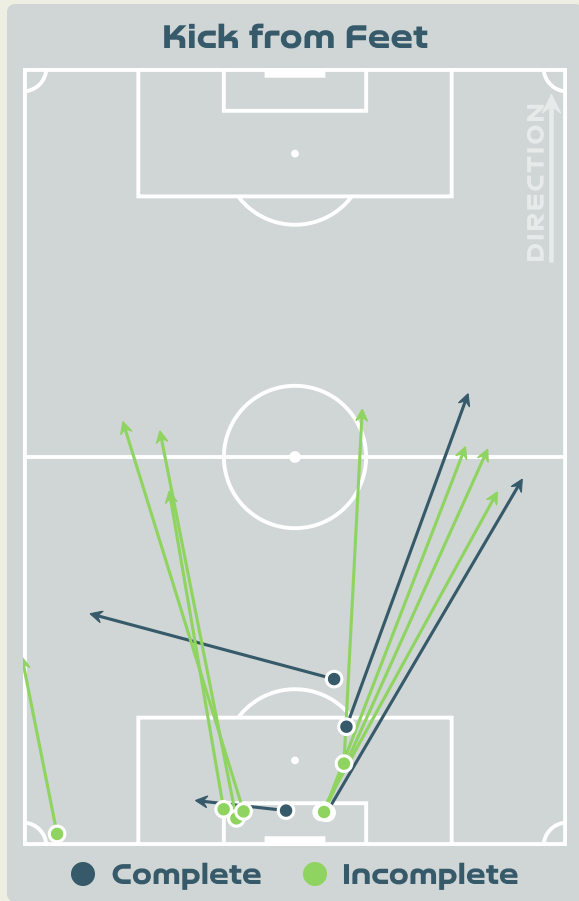
31

Total Involvements

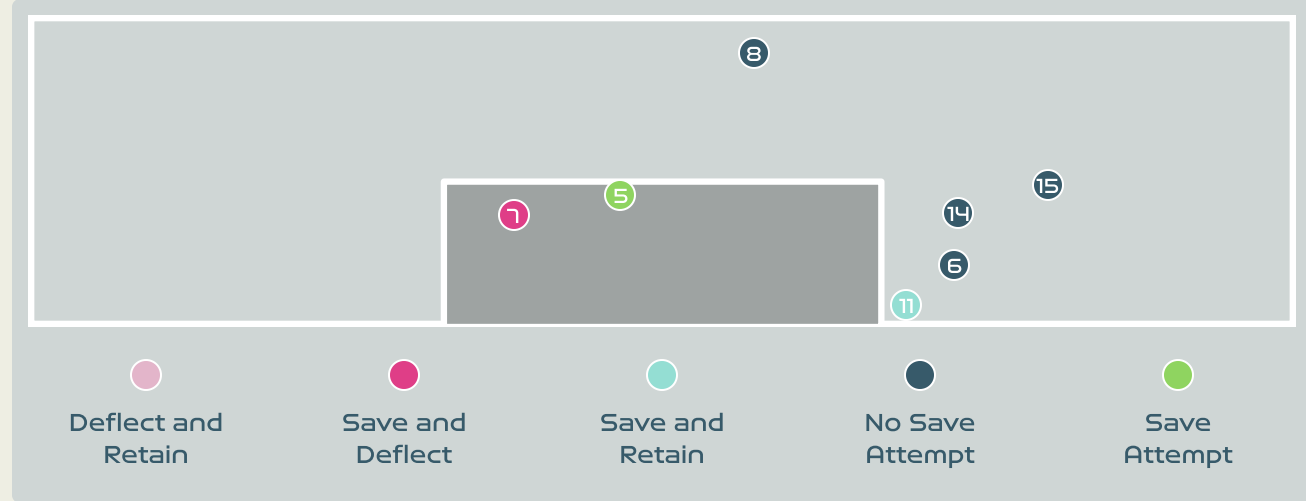
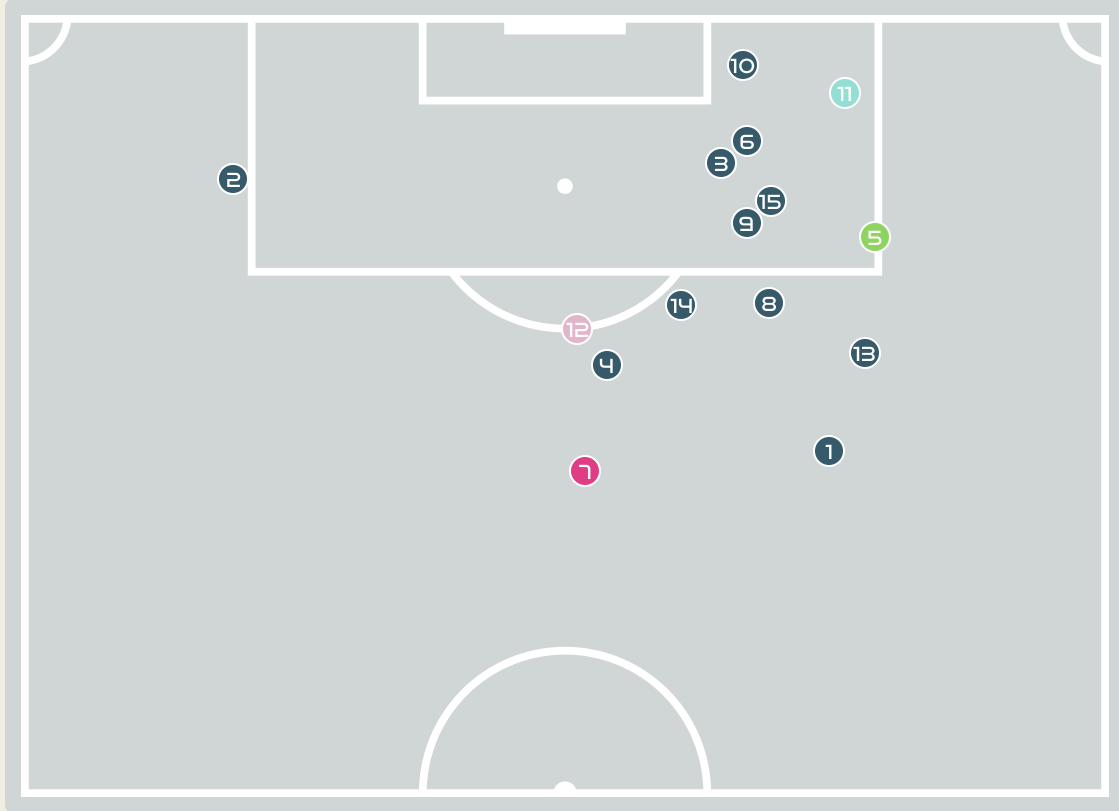
Goalkeeping Distribution



Goalkeeping Distribution

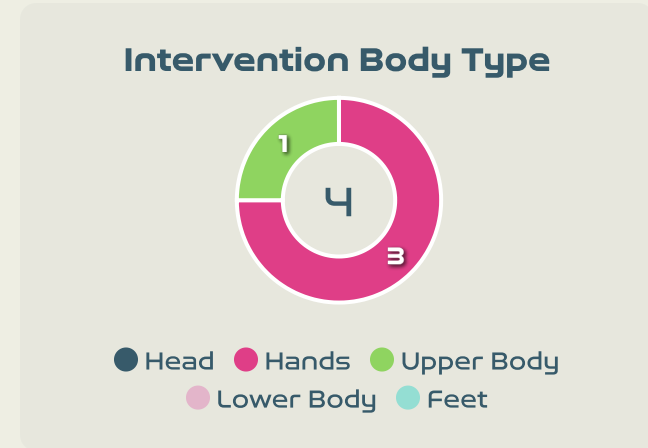
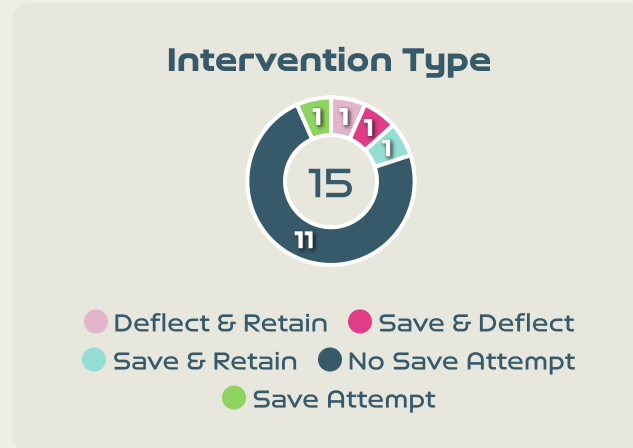


Goal Prevention



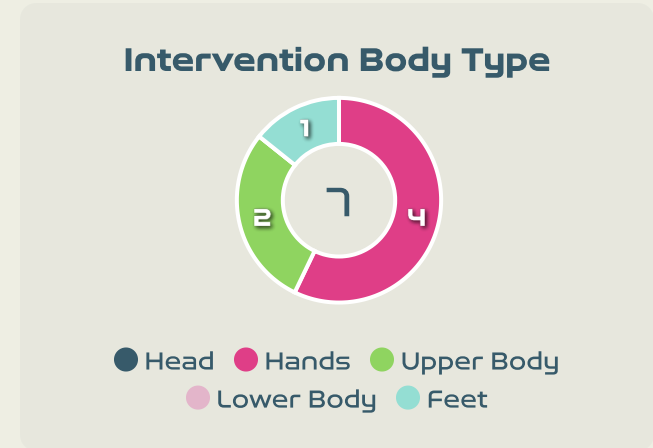
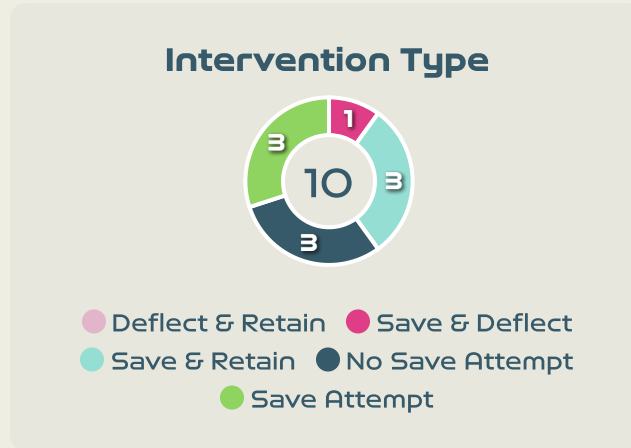
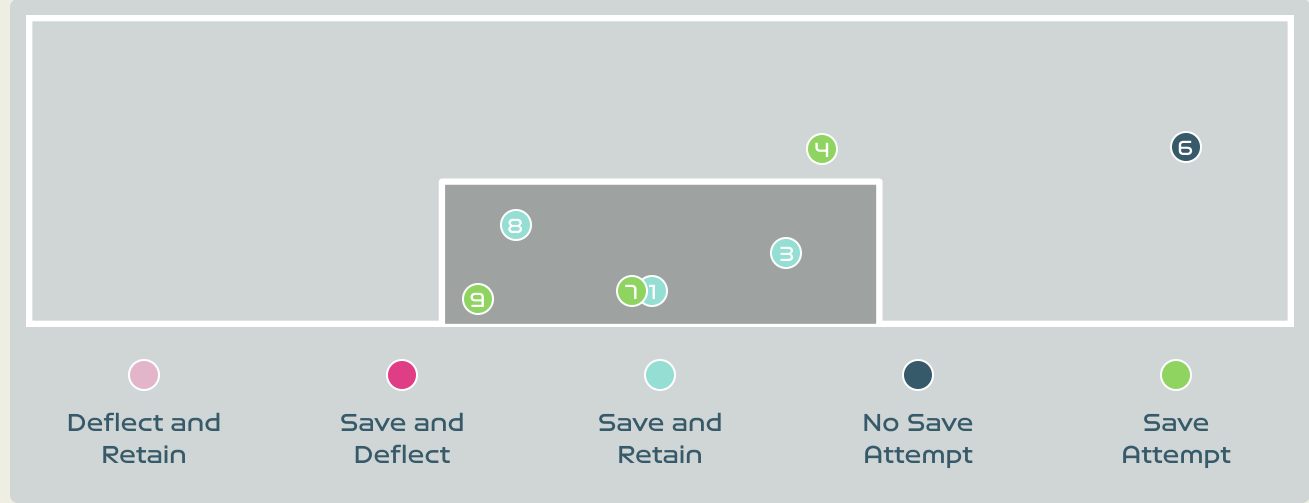
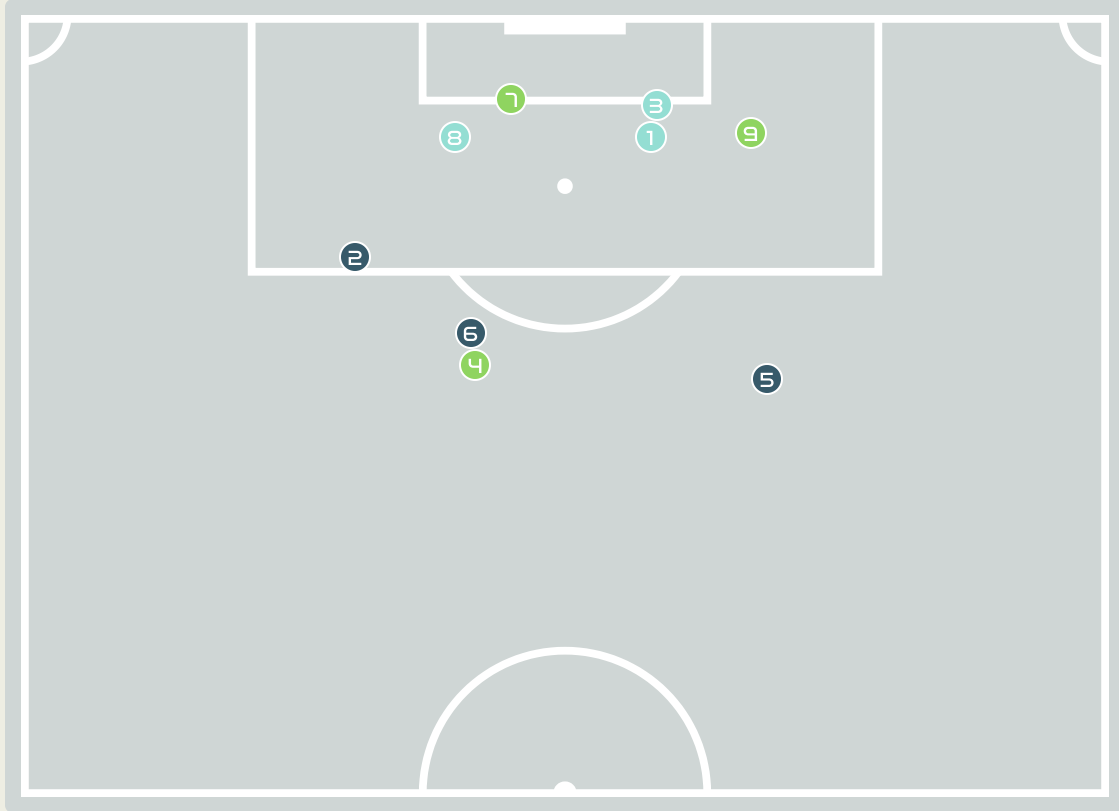
15
Total Attempts on Goal Faced

50
Save %



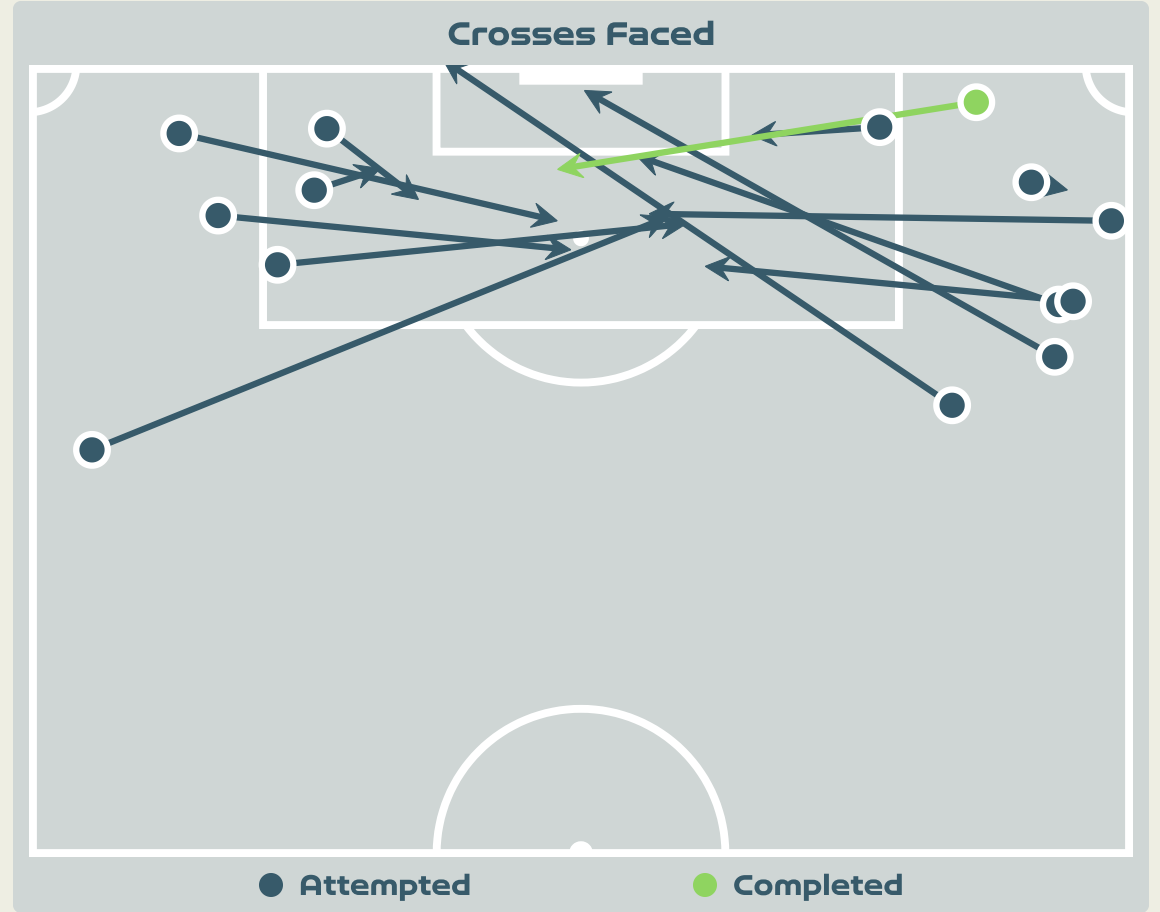
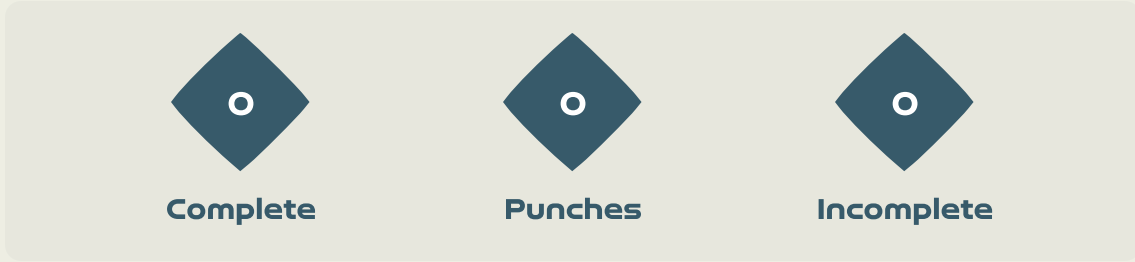
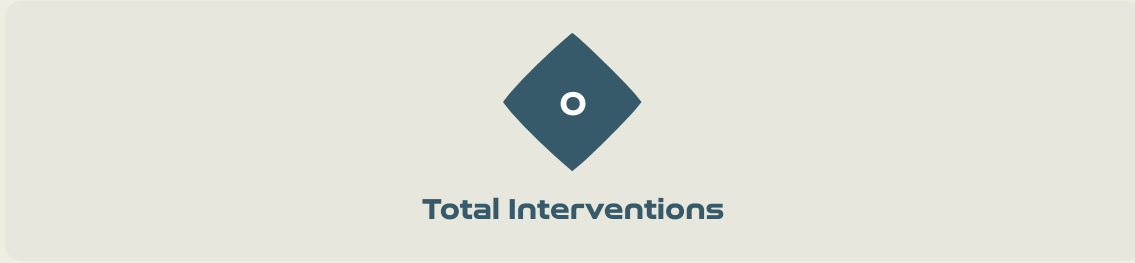
Total Attempts on Goal Faced	Total Goal Interventions	Save & Retain	Deflect & Retain	Save & Deflect	Save Attempt	No Save Attempt
15	2	1	0	1	1	11

Goal Prevention



Total Attempts on Goal Faced	Total Goal Interventions	Save & Retain	Deflect & Retain	Save & Deflect	Save Attempt	No Save Attempt
10	4	3	0	1	3	3

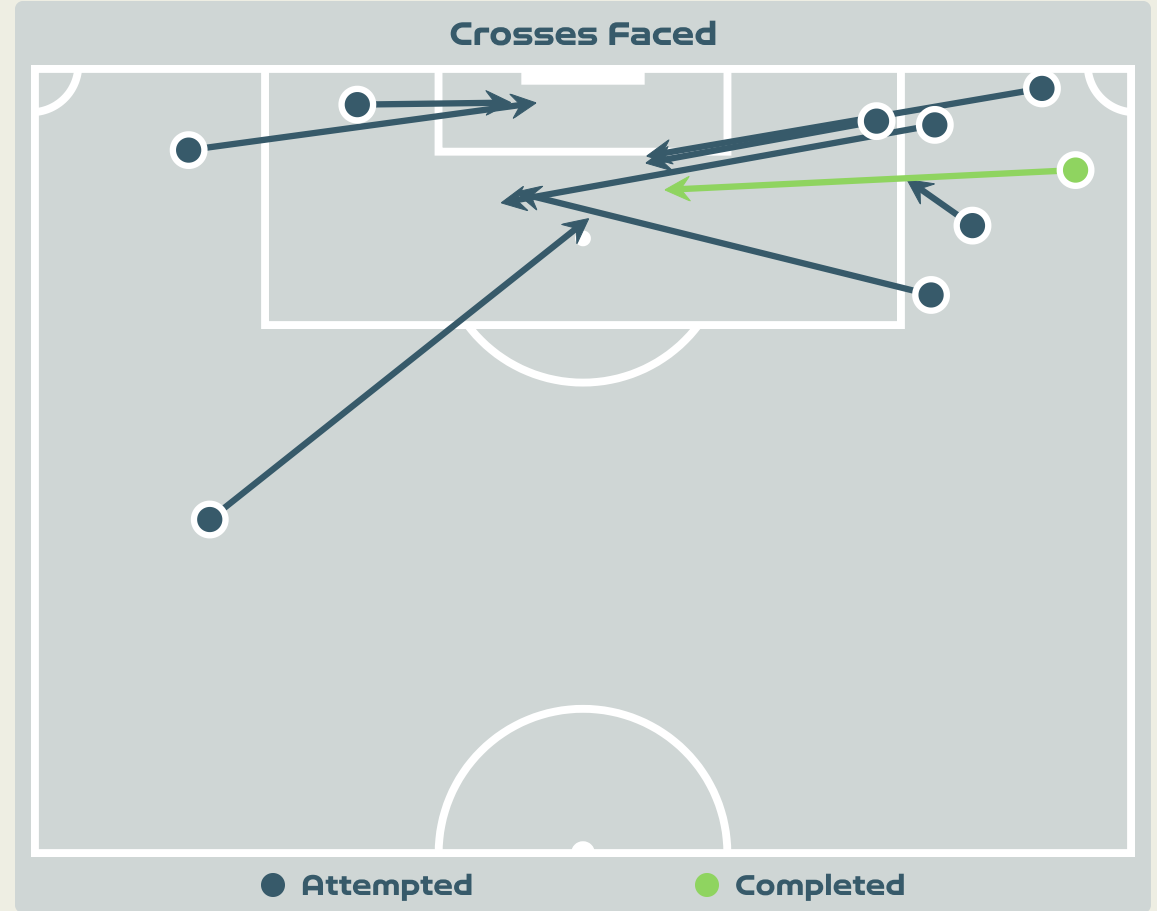
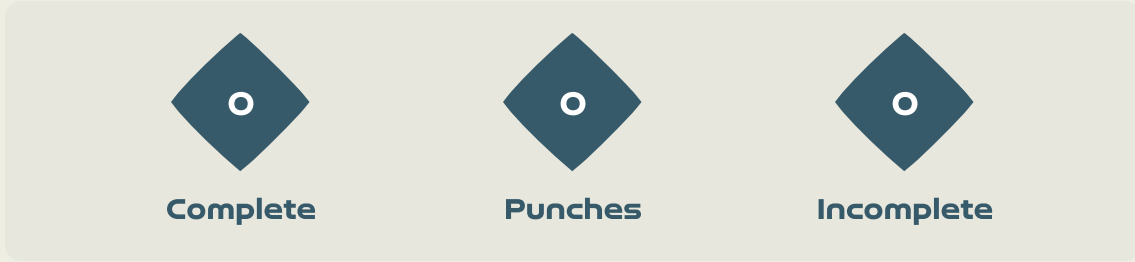
Aerial Control



Delivery Types Faced

Total	In Swing	Out Swing	Driven	Lofted	Cutback	Push
16	2	3	1	7	0	3

Aerial Control



Delivery Types Faced

Total	In Swing	Out Swing	Driven	Lofted	Cutback	Push
14	4	1	2	5	1	1



SET PLAYS



England v Colombia



Set Plays - Corners



41

Total Set Plays

9

Total Free Kicks

0

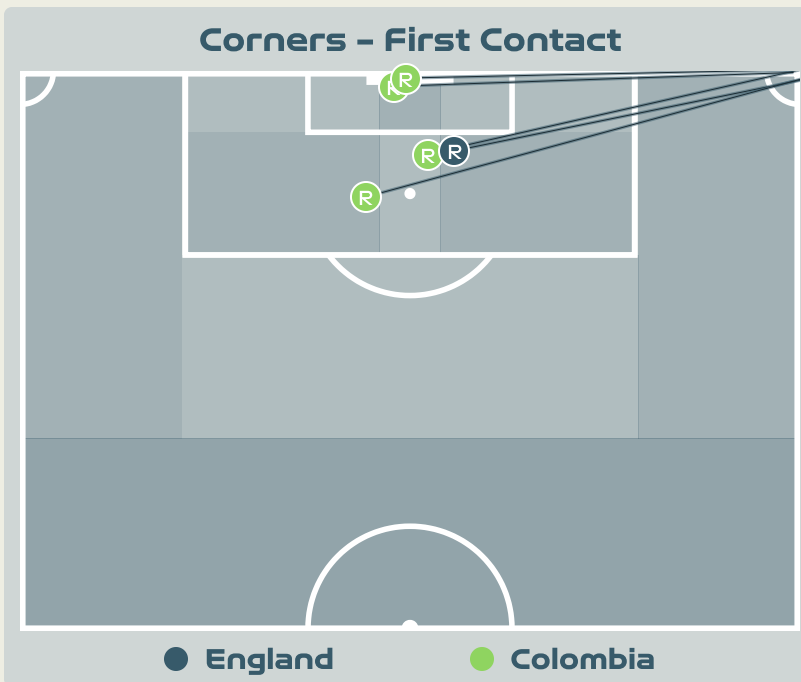
Total Penalties

5

Total Corners

27

Total Throw Ins



Delivery Type	From Left Side	From Right Side	Total
Direct to Area	0	5	5
Short	0	0	0
Edge of Penalty Area	0	0	0

Delivery Style	Total
Inswing	3
Outswing	0
Driven	1

Free Kicks	
Type	Total
Direct	8
Direct (on target)	0
Direct (off target)	0
Indirect	1

First Contacts on England Crosses

1

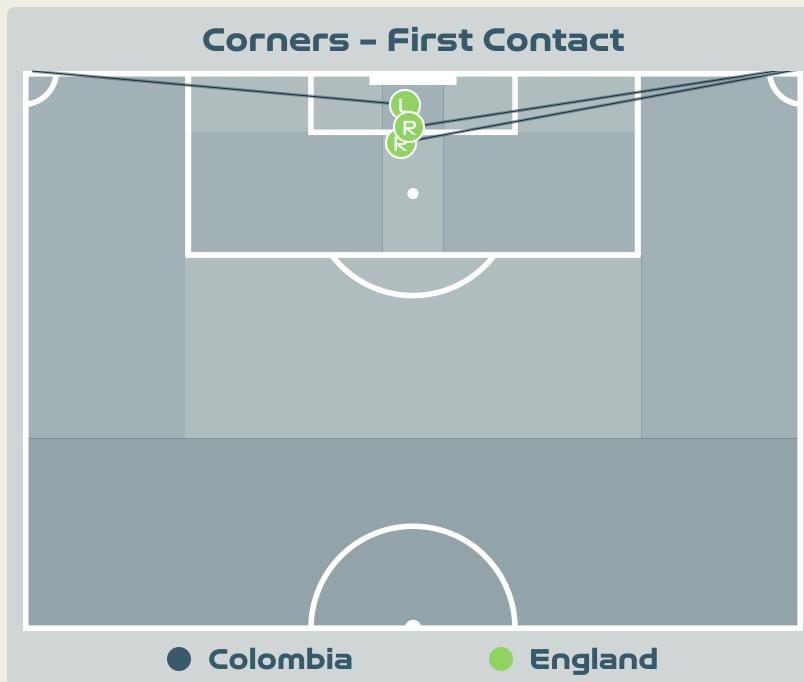
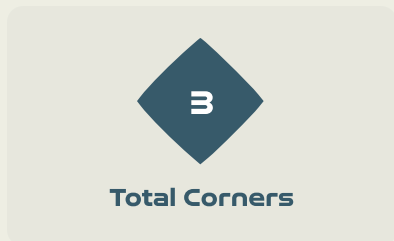
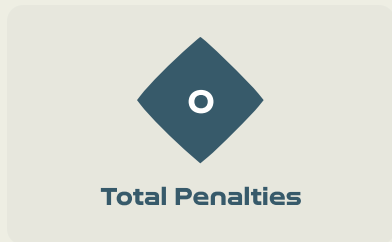
By England

4

By Colombia

Top 5 Player First Contacts		
Player	Team	Total
ARIAS Daniela	Colombia	2
DALY Rachel	England	1
PEREZ Catalina	Colombia	1
GIRALDO Natalia	Colombia	1

Set Plays - Corners



Delivery Type	From Left Side	From Right Side	Total
Direct to Area	1	1	2
Short	0	1	1
Edge of Penalty Area	0	0	0

Delivery Style	Total
Inswing	1
Outswing	0
Driven	0

Free Kicks	
Type	Total
Direct	5
Direct (on target)	0
Direct (off target)	0
Indirect	1

First Contacts on Colombia Crosses



Top 5 Player First Contacts		
Player	Team	Total
BRIGHT Millie	England	2
CARTER Jessica	England	1



INDIVIDUAL DATA IN POSSESSION



England v Colombia



In Possession - Distributions



#	Player	Passes Attempted	Passes Completed	Pass Completion %	Switches of Play	Crosses Attempted	Crosses Completed	Line Breaks Attempted	Line Breaks Completed	Line Break Completion %	Ball Progressions	Take Ons	Step Ins	Attempts at Goal	Goals
1	EARPS Mary	27	22	81%	0	0	0	5	3	60%	0	0	0	0	0
2	BRONZE Lucy	60	42	70%	0	2	0	20	10	50%	2	1	1	0	0
4	WALSH Keira	60	56	93%	0	0	0	24	22	91%	1	1	0	2	0
5	GREENWOOD Alex	70	67	96%	0	3	1	21	18	85%	4	0	4	0	0
6	BRIGHT Millie	71	66	93%	0	0	0	24	21	87%	1	1	0	0	0
8	STANWAY Georgia	54	42	78%	0	2	1	21	13	61%	4	2	2	1	0
9	DALY Rachel	49	38	78%	0	1	0	8	4	50%	1	1	0	3	0
10	TOONE Ella	42	35	83%	0	0	0	7	4	57%	0	0	0	0	0
11	HEMP Lauren	23	18	78%	0	3	1	5	2	40%	7	3	4	1	1
16	CARTER Jessica	45	40	89%	1	0	0	6	4	66%	0	0	0	0	0
23	RUSSO Alessia	16	14	88%	0	3	0	3	0	0%	1	1	0	2	1
18	KELLY Chloe	4	2	50%	0	0	0	1	0	0%	1	0	1	0	0
19	ENGLAND Beth	1	1	100%	0	0	0	0	0	0%	0	0	0	0	0

In Possession - Offers & Receptions



			Offer movement types						
#	Player	Total Offers	In Front	In Between	Out to In	In to Out	In Behind	No Movement	Offers Received
1	EARPS Mary	6	0	0	0	0	0	6	3
2	BRONZE Lucy	44	8	2	1	1	11	21	16
4	WALSH Keira	42	31	9	0	1	0	1	26
5	GREENWOOD Alex	5	0	0	0	0	0	5	4
6	BRIGHT Millie	10	1	0	0	0	0	9	5
8	STANWAY Georgia	59	11	20	7	9	2	10	29
9	DALY Rachel	37	7	1	0	0	7	22	17
10	TOONE Ella	40	5	22	2	5	3	3	14
11	HEMP Lauren	52	4	17	3	1	25	2	15
16	CARTER Jessica	11	3	0	0	0	0	8	5
23	RUSSO Alessia	40	0	23	0	2	15	0	11
18	KELLY Chloe	6	0	2	0	1	3	0	2
19	ENGLAND Beth	3	0	1	0	0	2	0	1

In Possession - Distributions



#	Player	Passes Attempted	Passes Completed	Pass Completion %	Switches of Play	Crosses Attempted	Crosses Completed	Line Breaks Attempted	Line Breaks Completed	Line Break Completion %	Ball Progressions	Take Ons	Step Ins	Attempts at Goal	Goals
1	PEREZ Catalina	11	3	27%	0	0	0	5	1	20%	0	0	0	0	0
2	VANEGAS Manuela	42	30	71%	1	2	0	20	13	65%	0	0	0	1	0
3	ARIAS Daniela	17	13	76%	1	0	0	3	3	100%	0	0	0	0	0
4	OSPINA GARCIA Diana	20	18	90%	0	0	0	2	2	100%	0	0	0	1	0
5	BEDOYA DURANGO Lorena	27	20	74%	0	0	0	14	9	64%	0	0	0	2	0
9	RAMIREZ Mayra	19	16	84%	0	1	0	2	0	0%	2	1	1	2	0
10	SANTOS Leicy	52	42	81%	0	4	0	15	10	66%	1	1	0	2	1
11	USME Catalina	35	28	80%	2	2	0	14	8	57%	0	0	0	1	0
17	ARIAS Carolina	8	6	75%	0	0	0	3	2	66%	0	0	0	0	0
18	CAICEDO Linda	33	27	82%	1	2	1	9	8	88%	8	6	2	3	0
19	CARABALI Jorelyn	29	21	72%	0	0	0	12	6	50%	2	0	2	0	0
13	GIRALDO Natalia	6	3	50%	0	0	0	2	1	50%	0	0	0	0	0
15	GUZMAN Ana	34	23	68%	0	5	0	16	10	62%	1	0	1	0	0
21	CHACON Ivonne	6	6	100%	0	0	0	0	0	0%	0	0	0	3	0

In Possession - Offers & Receptions



			Offer movement types						
#	Player	Total Offers	In Front	In Between	Out to In	In to Out	In Behind	No Movement	Offers Received
1	PEREZ Catalina	4	0	0	0	0	0	4	0
2	VANEGAS Manuela	74	24	11	0	0	5	34	21
3	ARIAS Daniela	13	0	1	0	0	0	12	6
4	OSPINA GARCIA Diana	6	2	2	0	0	1	1	2
5	BEDOYA DURANGO Lorena	10	1	5	0	1	0	3	5
9	RAMIREZ Mayra	32	0	9	1	3	16	3	8
10	SANTOS Leicy	61	8	29	3	4	10	7	22
11	USME Catalina	35	13	9	3	0	0	10	13
17	ARIAS Carolina	3	0	0	0	0	1	2	1
18	CAICEDO Linda	28	1	3	0	1	8	15	14
19	CARABALI Jorelyn	1	1	0	0	0	0	0	1
13	GIRALDO Natalia	0	0	0	0	0	0	0	0
15	GUZMAN Ana	11	0	3	0	0	3	5	3
21	CHACON Ivonne	9	1	0	0	0	5	3	2



INDIVIDUAL DATA OUT OF POSSESSION



England v Colombia



Out of Possession



#	Player	Tackles Made / Won	Blocks	Interceptions	Pressing Direct	Pressing Indirect	Duels Won - Aerial	Duels Won - Physical	Possession Contests won	Clearances	Loose Ball Receptions	Pushing On	Pushing On into Pressing	Possession Regains	Possession Interrupted
1	PEREZ Catalina	0 / 0	0	0	0	0	0	0	0	0	1	0	0	4	0
2	VANEGAS Manuela	8 / 1	4	1	9	18	3	0	3	8	6	43	16	6	7
3	ARIAS Daniela	9 / 3	3	2	10	8	3	0	3	11	3	12	4	9	11
4	OSPINA GARCIA Diana	3 / 0	2	0	3	30	0	0	1	1	8	22	9	2	1
5	BEDOYA DURANGO Lorena	8 / 5	2	3	9	26	2	0	5	3	9	30	14	9	4
9	RAMIREZ Mayra	1 / 0	2	0	5	24	1	1	3	0	11	12	7	2	1
10	SANTOS Leicy	6 / 2	2	0	6	34	1	0	2	1	8	15	6	6	1
11	USME Catalina	2 / 0	5	2	2	32	2	0	2	1	9	18	15	4	3
17	ARIAS Carolina	0 / 0	0	0	0	0	0	0	0	0	0	0	0	0	0
18	CAICEDO Linda	1 / 1	1	0	4	8	0	0	1	0	6	6	5	3	0
19	CARABALI Jorelyn	2 / 0	0	1	6	5	0	1	1	6	7	12	6	2	4
13	GIRALDO Natalia	0 / 0	0	0	0	0	0	0	0	0	1	0	0	2	0
15	GUZMAN Ana	6 / 3	1	0	7	5	2	0	3	2	3	16	6	6	2
21	CHACON Ivonne	1 / 0	0	0	1	4	0	1	1	2	2	0	0	0	1



INDIVIDUAL DATA PHYSICAL



England v Colombia



Physical Data



#	Player	Total Distance (m)	Zone 1: 0-7 km/h (m)	Zone 2: 7-13km/h (m)	Zone 3: 13-19km/h (m)	Zone 4: 19-23km/h (m)	Zone 5: 23+ km/h (m)	High Speed Runs (Zone 4)	Sprints (Zone 5)	Top Speed (km/h)
1	EARPS Mary	5151.9	4372.9	663.6	89.6	25.8	0	17.0	2.0	23.6
2	BRONZE Lucy	10694.8	3949.6	2884.4	2809.5	788.2	263.1	230.0	73.0	28.7
4	WALSH Keira	10322.8	3754.4	4023.8	2024.3	410.8	109.4	172.0	35.0	27.0
5	GREENWOOD Alex	9113.3	3328.2	3454.0	1781.7	471.2	76.6	153.0	33.0	26.0
6	BRIGHT Millie	9523.2	3823.6	3418.8	1855.1	252.4	172.4	162.0	26.0	28.2
8	STANWAY Georgia	10212.2	4245.2	3337.3	2206.9	306.4	117.4	172.0	30.0	30.6
9	DALY Rachel	10633.9	4013.2	3425.2	2482.0	525.3	188.2	189.0	42.0	27.6
10	TOONE Ella	10621.0	3611.1	3818.2	2661.6	423.8	106.2	222.0	43.0	28.6
11	HEMP Lauren	10200.1	3854.6	3189.6	2328.7	539.6	288.7	188.0	52.0	30.5
16	CARTER Jessica	9484.3	3392.5	3837.3	1729.9	343.3	182.1	153.0	36.0	28.1
23	RUSSO Alessia	9418.6	3551.7	2923.5	2341.5	375.8	226.0	189.0	46.0	29.2
18	KELLY Chloe	1581.1	549.0	596.6	319.5	43.8	72.3	34.0	6.0	27.4
19	ENGLAND Beth	802.2	219.2	312.4	183.1	56.0	31.5	16.0	6.0	24.4

Physical Data



#	Player	Total Distance (m)	Zone 1: 0-7 km/h (m)	Zone 2: 7-13km/h (m)	Zone 3: 13-19km/h (m)	Zone 4: 19-23km/h (m)	Zone 5: 23+ km/h (m)	High Speed Runs (Zone 4)	Sprints (Zone 5)	Top Speed (km/h)
1	PEREZ Catalina	2761.4	2320.2	377.8	63.5	0	0	13.0	0	20.0
2	VANEGAS Manuela	9941.0	3875.0	3435.6	2010.1	463.3	158.1	173.0	47.0	31.9
3	ARIAS Daniela	9690.6	3764.8	3741.6	1709.4	323.7	151.2	148.0	36.0	28.3
4	OSPINA GARCIA Diana	8210.3	3070.7	2924.5	1864.6	272.6	78.8	158.0	28.0	28.9
5	BEDOYA DURANGO Lorena	9659.2	3482.2	3408.7	2288.3	375.7	104.3	185.0	39.0	30.9
9	RAMIREZ Mayra	9189.3	4005.6	3040.8	1465.7	412.6	264.7	126.0	42.0	29.8
10	SANTOS Leicy	11177.2	3471.6	4076.3	2832.3	631.5	166.5	216.0	62.0	30.1
11	USME Catalina	10553.8	3781.4	4387.2	2136.1	249.1	0	172.0	22.0	24.5
17	ARIAS Carolina	669.6	344.8	139.4	115.4	24.4	45.7	9.0	3.0	27.4
18	CAICEDO Linda	8638.4	4263.0	1897.0	1450.4	565.8	462.2	146.0	56.0	32.4
19	CARABALI Jorelyn	9544.7	3952.5	3732.9	1359.2	349.3	151.8	125.0	35.0	28.7
13	GIRALDO Natalia	1246.7	922.8	197.2	126.7	0	0	13.0	0	18.2
15	GUZMAN Ana	8873.0	3363.8	3488.9	1421.5	443.7	155.3	122.0	32.0	27.1
21	CHACON Ivonne	2299.1	881.0	647.4	430.2	160.9	179.6	43.0	20.0	30.3

